

60 Years of Beef Cattle Shortcourse History

Alvin Warnick
and
Todd Thrift

What did the Florida Cattle Industry look like 60 years ago?

Marketing

Cattle numbers tripled from 1929-1952

Calves were worth 20-25\$/cwt

Hogs were reported to be way more profitable
than cattle

Purebred bulls cost 300-500\$

60% of FL livestock sold through auction
markets (14)

What did the Florida Cattle Industry look like 60 years ago?

Health

Florida cattleman magazine reported monthly the number of tick infected herds in each county

Many counties were tick free by 1948

Outbreak in 1949 resulted in GA, AL, MS, LA requiring a dipping certificate accompany cattle

Producers Battling Screw Worms

Amazing New Screw Worm Treatment

WHITMIRE'S **SCREW WORM ATOMIZER BOMB**

In every actual cattle range test, reports have been close to sensational — screw worms were actually “flushed” from aggravated wounds — irritation was eased quickly — infection was halted. Can be used on dairy animals — contains no DDT.

Treatment is simple and convenient, and requires only a few seconds. A light spray of Screw Worm Bomb ingredients is forced under pressure deep into the wound where screw worms are working. Action is immediate — worms actually “boil” to the surface where they die. The wound is automatically cleansed by the penetration of the chemical and healing starts at once.

Whitmire's Screw Worm Bomb treatment has been proved far more practical and effective than ordinary methods where remedies are applied by brush. (1) The application of Screw Worm ingredients reaches deep into wounds which brushing cannot do. (2) Disease cannot be transmitted from one animal to another. (3) Irritation, caused by brushing, is entirely prevented. (4) Spraying eliminates all waste, takes far less time and effort.

WRITE, WIRE OR PHONE TODAY
FOR COMPLETE DETAILS

DAN BOYD CO.

603 Marion Street

Tampa, Florida

Manufactured by Whitmire Research Laboratories Inc. St. Louis 10 Mo.

NOTICE TO DEALERS Write at once. The acceptance of Whitmire's Screw Worm Bomb offers tremendous possibilities to help livestock producers in your vicinity.

Screw worms were never a topic at the FL shortcourse

What did the Florida Cattle Industry look like 60 years ago?

June 1949 -Fencing Bill passed to remove cattle from major highways-effective July 1, 1950

- 9.7 million acres under fence

- 1.1 million acres of improved pasture

- improved pasture rent 1-6\$/acre

March 1950- "Utahans purchase 135,000 acres of land in FL"

What did the Florida Cattle Industry look like 60 years ago?

Predictions

"By 1975 there will be 250,000 cattle in the muckland of Palm Beach county" May 1950

Latest statistics suggest that in 2008 there were 2,000 hd of beef cows

114,688 people in palm beach county in 1950

1,279,950 people in palm beach county in 2009 (US census)

What did the Florida Cattle Industry look like 60 years ago?-Breeds

10,000 registered cattle in the state in December 1949 approximately 550 breeders

Brahman cattle had increased in popularity
153 breeders in FL in 1950

"In a short time 75% of ALL beef sold will
posses Brahman blood"

Norris Cattle Company in Ocala

What did the Florida Cattle Industry look like 60 years ago?-Breeds

Brahman

Hereford

Shorthorn

Devon

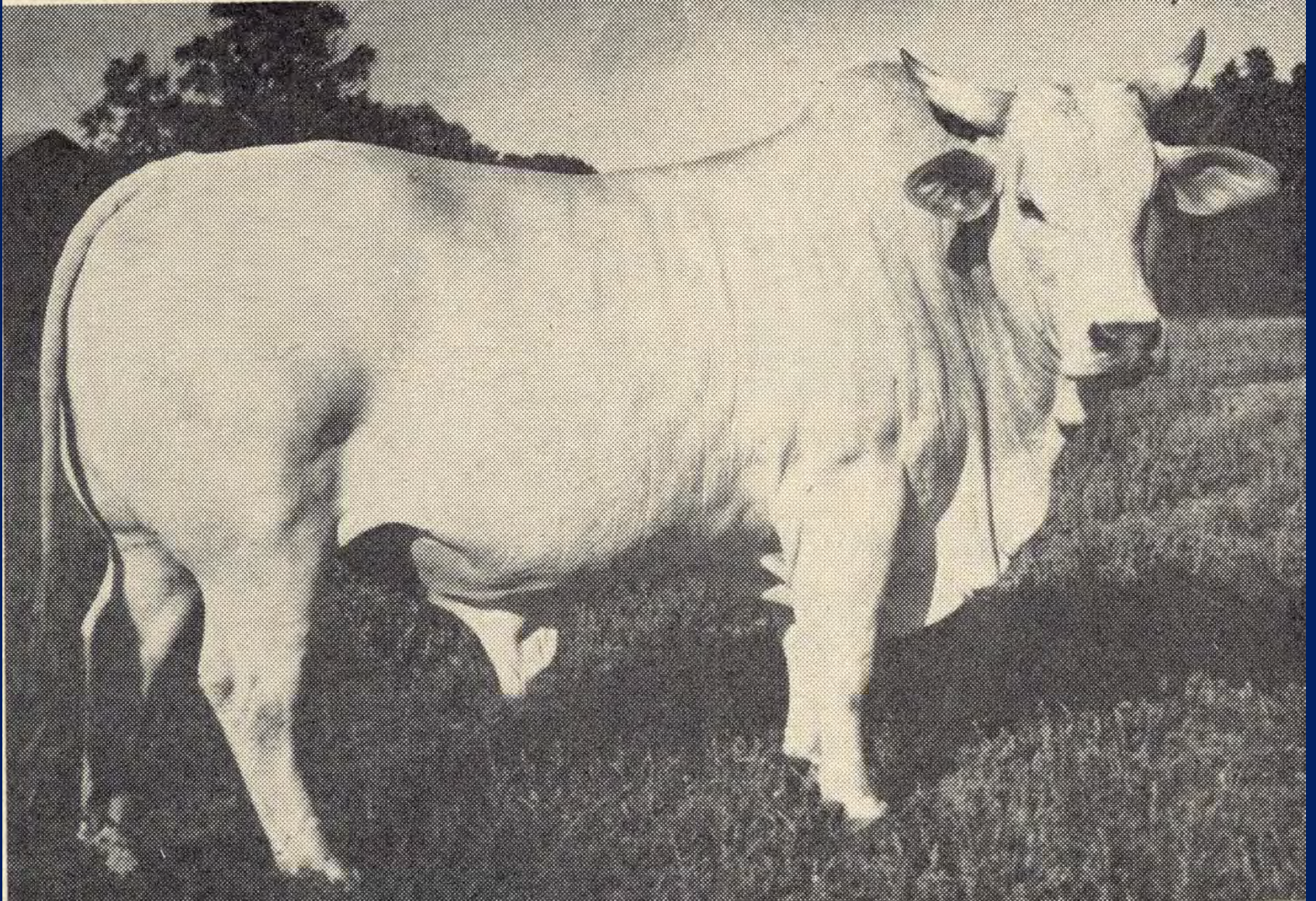
Santa Gertrudis

Red Poll

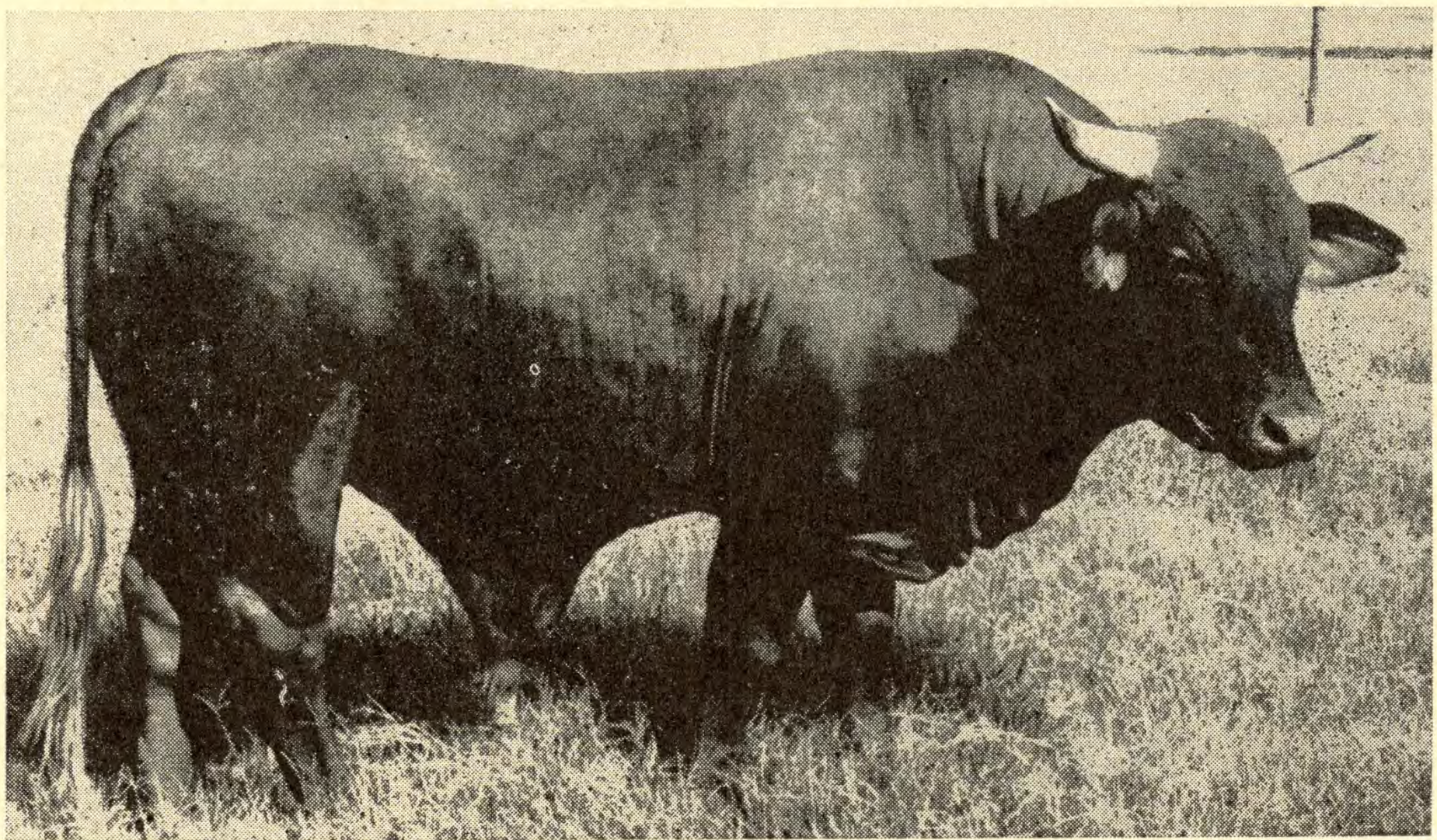
Brangus

Braford?

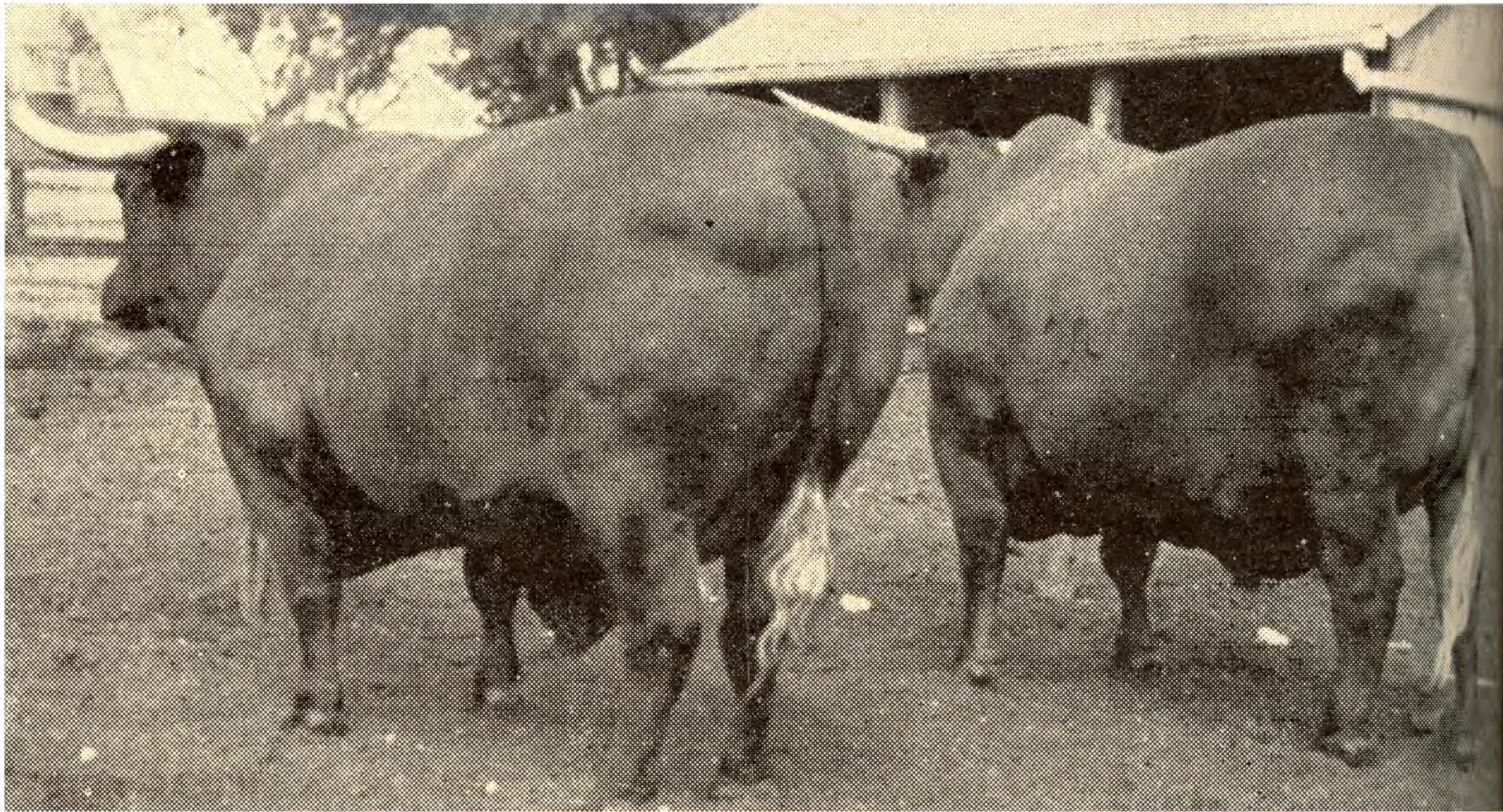
Brangus? Bull circa 1949



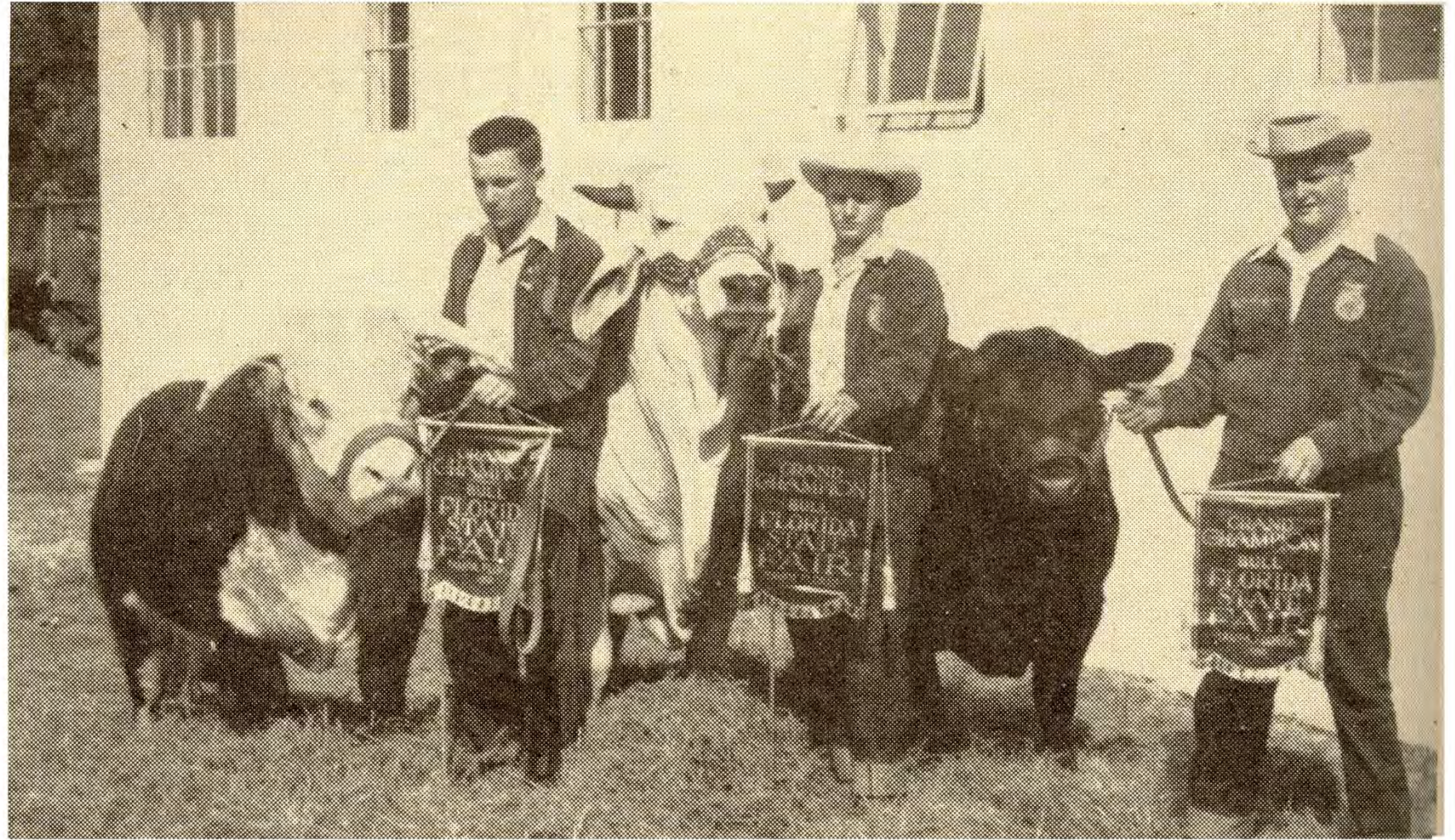
Gerts BUSTED onto the scene in
the early 1950's



Gerts were bigger



1952 State Fair Champion Bulls



Many of the English cattle were small



If you want to be a purebred breeder the 2 most important things to select for are a good head and good legs" WN Anderson Shorthorn breeder 1957

What did the Florida Cattle Industry look like 60 years ago?-Breeds

L. Maxy was using Charbray bulls and Charolais x Herford bulls (1800 lbs)

What did the Florida Cattle Industry look like 60 years ago?

Reproduction

"1st Florida calf (dairy) born to AI reported in October 1949"

<60% calf crop was the norm

What did the Florida Cattle Industry look like 60 years ago?

Research

Experiment: to determine if cattle can be maintained on a single pasture for an indefinite period of time

Believed that cattle must be moved periodically to prevent a decline in performance commonly termed "SICK"

640 acres of land was to be purchased to run this experiment

What did the Florida Cattle Industry look like 60 years ago?

Research

Texas data revealed that Brahman crosses make better mother cows

August 1949

USDA publishes 1st crossbred study done in Louisiana.

Brahman x Angus cross cows superior to straight Angus in WW by 50lbs.

What did the Florida Cattle Industry look like 60 years ago?

Animal Welfare

"Improper stock handling causes bruises"

grubs

flukes

overloading trucks

rough handling

horns

mixing bulls with cows in loads

A.L. Shealy

What did the Florida Cattle Industry look like 60 years ago?

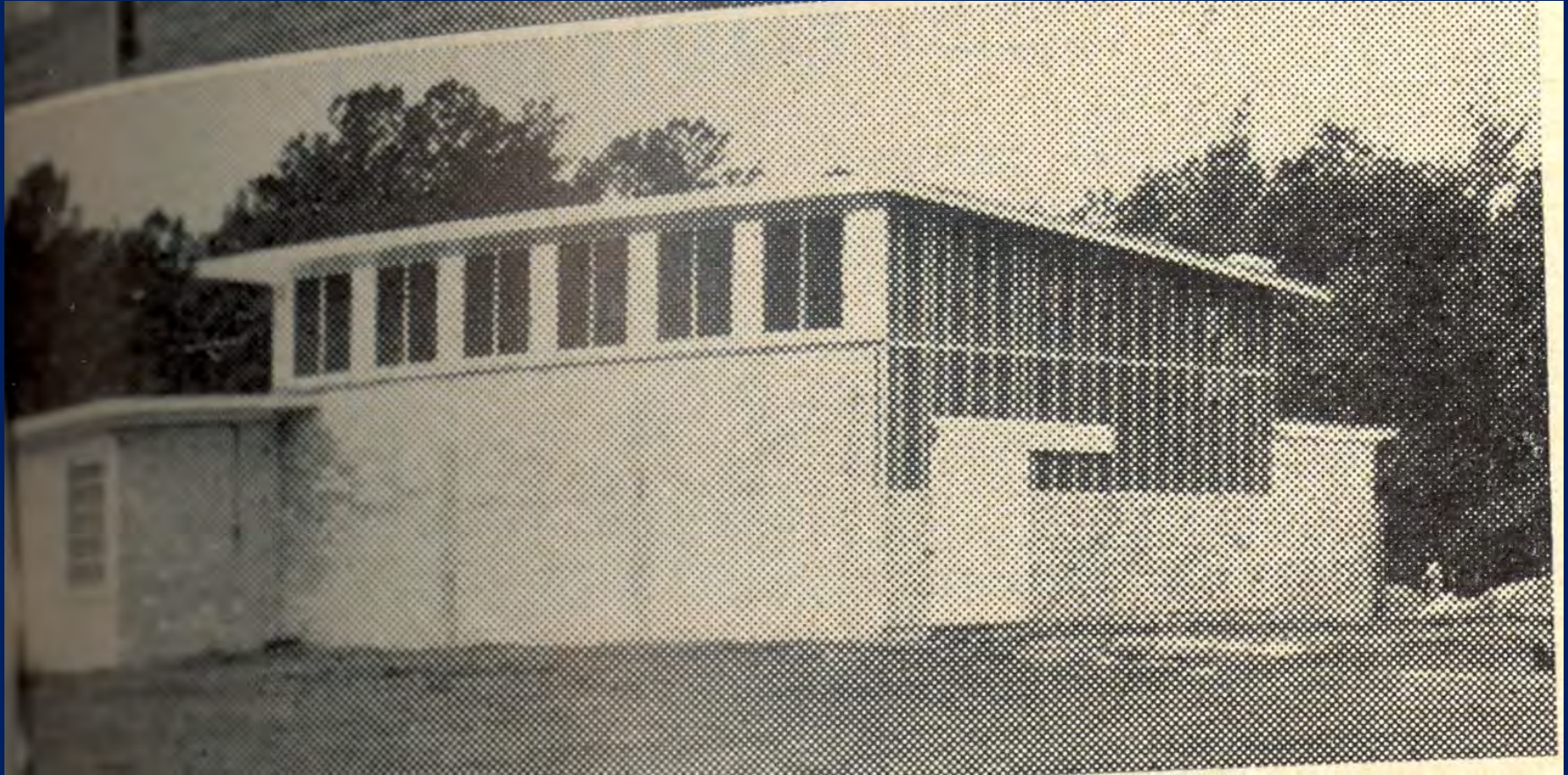
Nutrition

"Linseed meal is the secret to finishing beef -produces more bloom and a more mellow hide"

"Okra seed meal offers the most potential for a future feedstuff in FL"

"Feeding potatoes offers potential"

Meats Laboratory-1951- \$25,000



Webb Pavillion-1951- \$150,000



"A couple of miles WEST of Gainesville"



Early People Involved in the Florida Beef Cattle Shortcourse

- Dr. Tony Cunha
 - Arrived 1948
 - Chairman of the Animal Husbandry and Nutrition Department 1950
 - Chairman until 1974

Early People Involved in the Florida Beef Cattle Shortcourse

- Professor Jim Pace
 - Extension Beef Specialist
 - 1940-1980

Early People Involved in the Florida Beef Cattle Shortcourse

- Dr. Marvin Koger
 - Geneticist
 - From New Mexico
 - Managed the crossbreeding projects at the BRU and branch stations
 - Retired in 1988

Early People Involved in the Florida Beef Cattle Shortcourse

- Dr. Albert M. Person
 - Meat scientist and early livestock coach
 - Late 1940's to 1955

Early People Involved in the Florida Beef Cattle Shortcourse

- Dr. James F. Hentges
 - Oklahoma
 - Animal Nutrition
 - 1952-1986

Early People Involved in the Florida Beef Cattle Shortcourse

- Mr. Max Hammond, W.H. Stuart Brahmans, Bartow
- Mr. Louis Gilbreath, Camp Ranch , Ocala
- Mr. Dan Childs, Lake Placid
- Mr. Leroy Baldwin, Baldwin Angus Ranch, Ocala
- Mrs. Jeannette Chitty, Stardust Ranch, Micanopy

Early People Involved in the Florida Beef Cattle Shortcourse

Block and Bridle Club

This is What We Talked About in 1961

FRIDAY AFTERNOON

A.C. Warnick, Presiding

Comparison of Certain Purebred and Crossbred Cattle

1:15 Effect of Crossbreeding Brahman, Angus and Devon - R.W.Kidder

1:40 Feed Lot and Pasture Performance of Cattle - H. L.Chapman

1:55 Adaption of Breeds and Types to Florida Conditions - W.C.Burns

2:20 Effect of Various Breeds of Sires on Grade Brahman Cows - M.Koger

2:45 Feed Lot Performance of Crossbred Cattle at Quincy - F.S.Baker

3:00 Recess

Utilization of Crossbred Cattle

3:15 Production of Crossbred Slaughter Calves - Ralph Cellon

3:35 Demand for Crossbred Cattle-Stocker-Feeder Market - G.N.Rhodes

3:50 Feed Lot Performance and Gradeability of Crossbreds - T.L.Mack

4:10 Saleability of Crossbred Carcasses Erwin Bryan - O.W.Dixon

4:30 Questions-Afternoon speakers plus Gilbreath, Crochet, Crockett

A. C. Warnick, Chm.

1961 - Short Course Speakers



1961 - Short Course Speakers



J.H.KNOX

DICK KELLY

**MARVIN
KOGER**

**MIKE
MILICEVIC**

P.E.WILLIAMS

M.E.HAMMOND

**ALTO ADAMS
JR.**

1961 - Lineup Of Speakers



1961 - On The Short Course Program



1961 - Marketing Panel



1961 - Lineup Of Speakers



1961 - Short Course Group



1965 - Short Course Speakers



1965 - Short Course Speakers



1

2

3

4

5

6

Which one is Alvin ?

1965 - Premier Award Recipients



1965 - Short Course Speakers



***R.S. TEMPLE,
KNOXVILLE
TENNESSEE***

***E.J. WARWICK,
BELTSVILLE
MARYLAND***

A.C. WARNICK

T.J. CUNHA

***J.N. WILTBANK,
CRAWFORD
NEBRASKA***

1966 - Premier Award Recipients



1966 - Premier Award Recipients



1966 - Short Course Speakers



1966 - Program Speakers



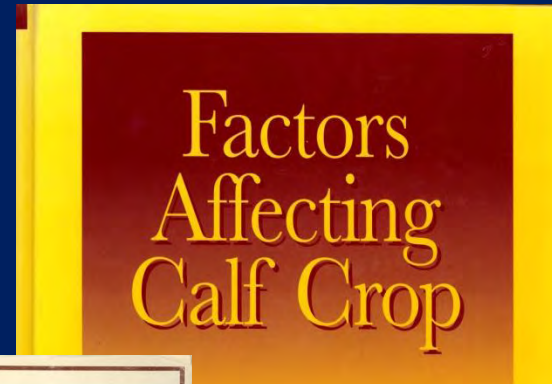
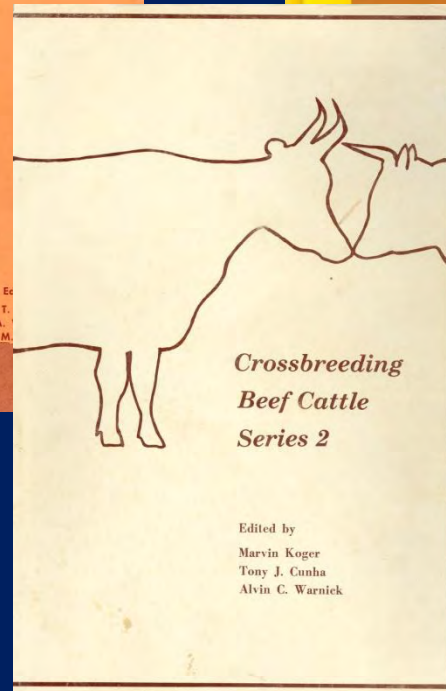
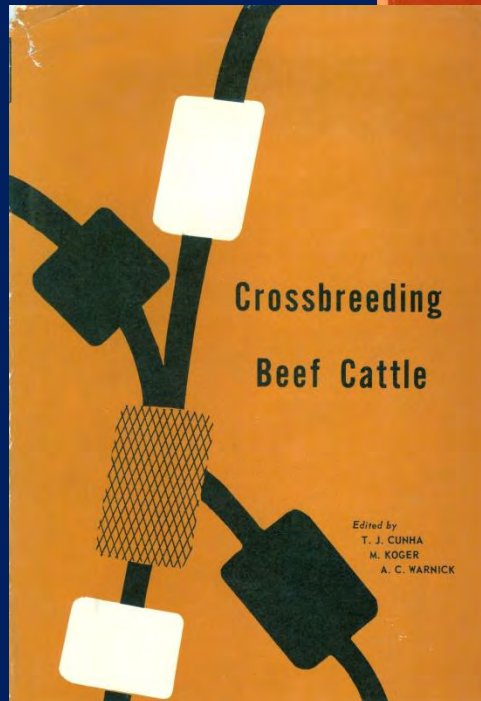
1971 - Crisscross Program at UF Beef Research Unit



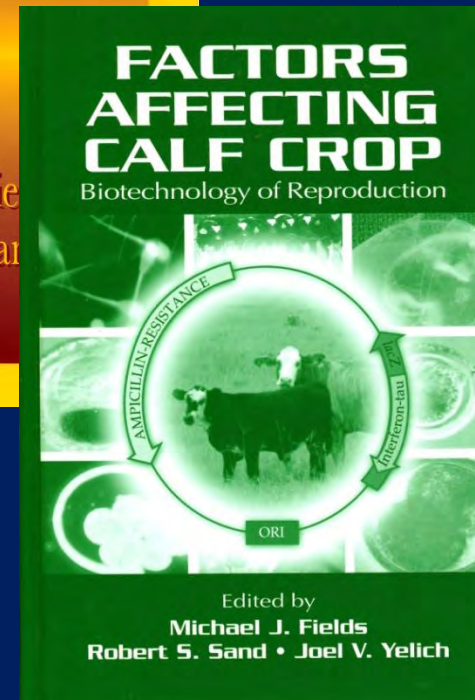
1971 - Touring the Beef Research Unit



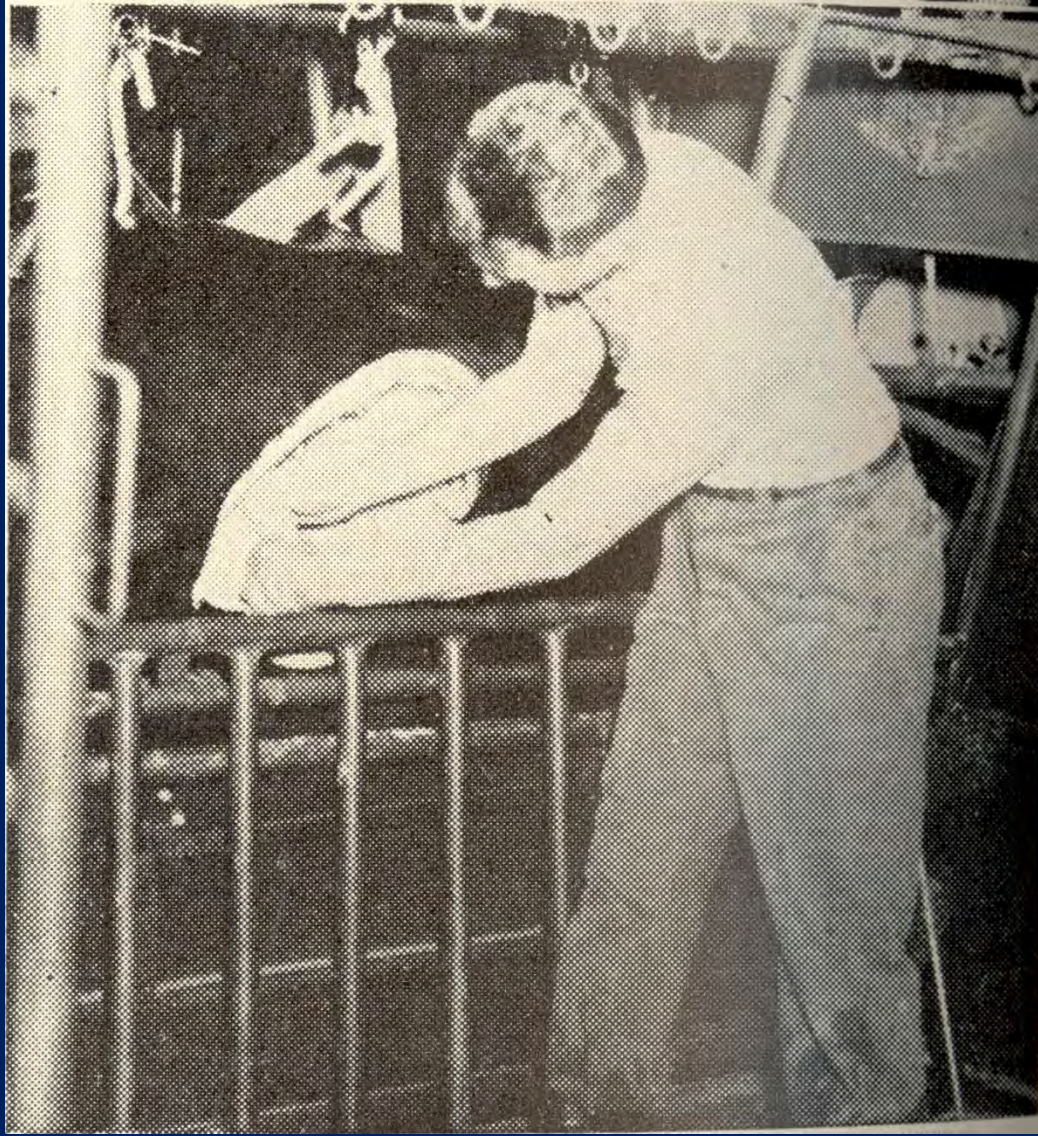
5 major books published from the Florida beef cattle shortcourses



Edited by
Michael J. Fields
Robert S. Sand



Dr. Warnick- Palpation





THANK YOU

Topics from the Florida Beef Shortcourse

In what year was it first discussed?

"Vertical Integration and its effects on the beef cattle industry of the future"

Charles Dell USDA

1959

1973

2001

Topics from the Florida Beef Shortcourse

In what year?

"Why do we produce so many light weight calves in Florida "

Jim Pace

1953

1963

1983

Low milk

Poor heifer selection

Poor bull selection

Long breeding season

Reduced feeding

Topics from the Florida Beef Shortcourse

In what year was it first discussed?

"The waste fat problem"

Dr. West

1965

1974

1997

Topics from the Florida Beef Shortcourse

In what year was it first discussed?

"Present status on the preconditioning of beef calves"

1969

1989

2006

Topics from the Florida Beef Shortcourse

In what year was it first discussed?

"Regulatory aspects of pollution control in the beef industry in Florida"

1955

1972

2000

Topics from the Florida Beef Shortcourse

In what year was it first discussed?

"Possibilities and Problems involved in
a 200% calf crop"

Dr. Bazer

1960

1970

2000

Topics from the Florida Beef Shortcourse

In what year was it first discussed?

"The future of nitrogen fixation by
grasses"

1956

1966

1976

Topics from the Florida Beef Shortcourse

In what year was it first discussed?

"Use of yearling versus two year old
bulls"

Dr. Warnick

1955

1970

1987

Topics from the Florida Beef Shortcourse

In what year was it first discussed?

"The national sire evaluation program
and how it works"

Dr. Warwick

1955

1972

2000

Topics from the Florida Beef Shortcourse

In what year was it first discussed?

"My experiences in marketing calves;
selling at weaning vs after being
custom fed in different feedlots"

Ralph Paleaz

1965

1975

1985

Topics from the Florida Beef Shortcourse

In what year was it first discussed?

"Video marketing of cattle "

1967

1975

1985

Topics from the Florida Beef Shortcourse

In what year was it first discussed?

"Electronic ID in the Beef Industry"

1990

2001

2008

Topics from the Florida Beef Shortcourse

In what year was it first discussed?

"Mole crickets and their control"

1961

1975

1991

Topics from the Florida Beef Shortcourse

In what year was it first discussed?

"Cattle Fax first appear on the Florida shortcourse program with the Market Outlook"

1987

1992

1997

Topics from the Florida Beef Shortcourse

In what year was it first discussed?

"Certified Angus Beef"

1977

1987

1997

Sales of CAB

1979 2000 lbs

1987 50 mil lbs

2010 777 mil lbs

Quotes from the Florida Beef Shortcourse

In what year?

"English bulls bred back to $\frac{1}{2}$ Brahman cows yields 85 lbs more calf than purebreds"

Dr. Warwick
20 yrs data

1951

1971

1991

Quotes from the Florida Beef Shortcourse

In what year?

"did FL import 50,000 head of cattle to feed."

1950

1962

1982

Quotes from the Florida Beef Shortcourse

In what year?

"AI isnt practical unless bulls and cows are extremely gentle"

Dr. Warnick

1957

1964

1997

Quotes from the Florida Beef Shortcourse

In what year?

"30% of your cows are costing you money"

Dr. Koger

1954

1964

1974

Quotes from the Florida Beef Shortcourse

In what year?

"All breeds of beef cattle will have a place in future breeding programs in Florida"

Dr. Cunha

1955

1961

1975

Quotes from the Florida Beef Shortcourse

In what year?

"Experience of cattlemen coupled with experimental data show that there is no existing breed that will perform satisfactorily under conditions on commercial ranches in Florida."

Dr. Koger

1951

1961

1971

Quotes from the Florida Beef Shortcourse

In what year?

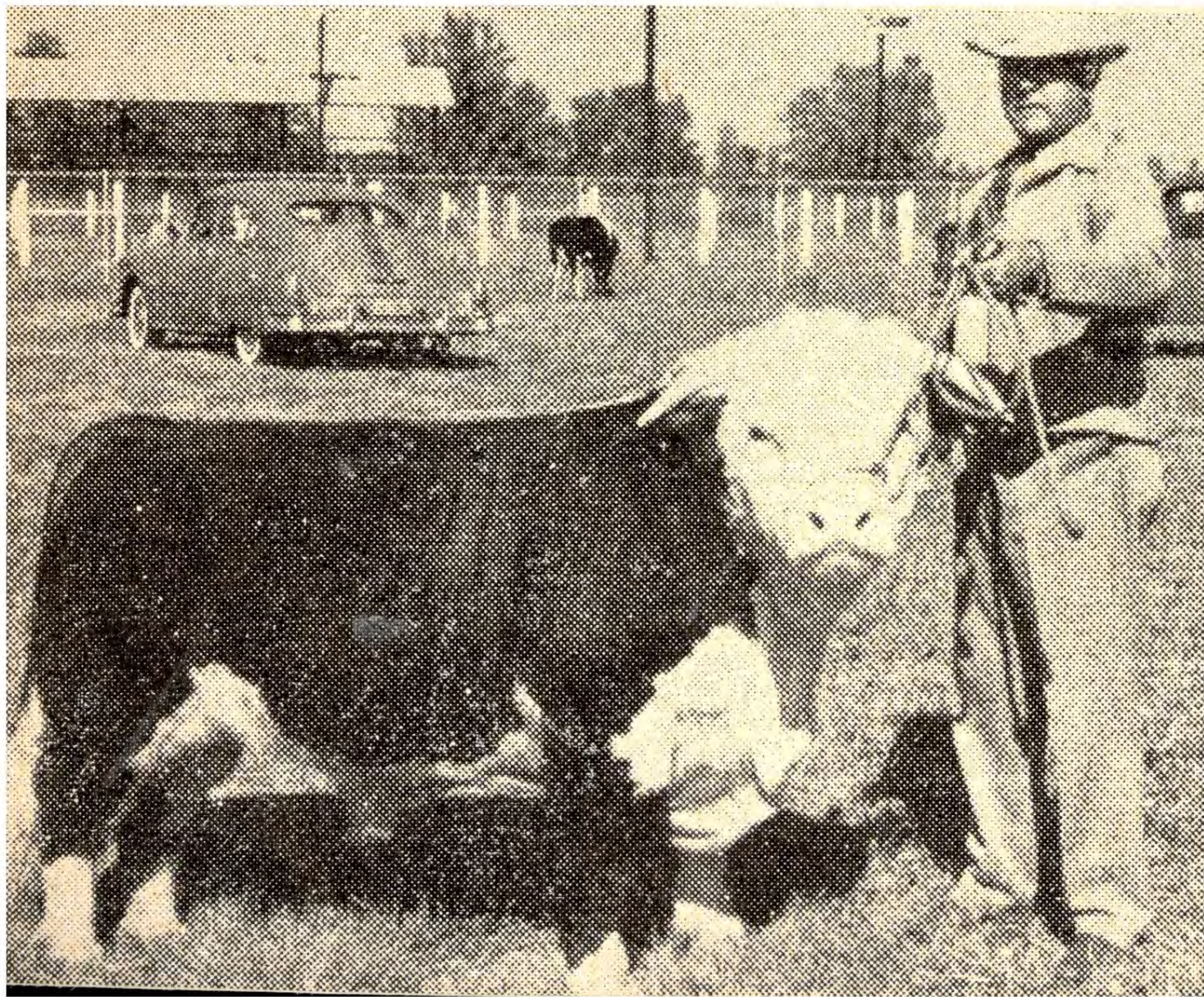
"It may well be that we are entering into a period when crossbreeding of beef cattle may become widespread throughout the US and Gulf Coast"

Dr. Koger

1951

1961

1981



Quotes from the Florida Beef Shortcourse

In what year?

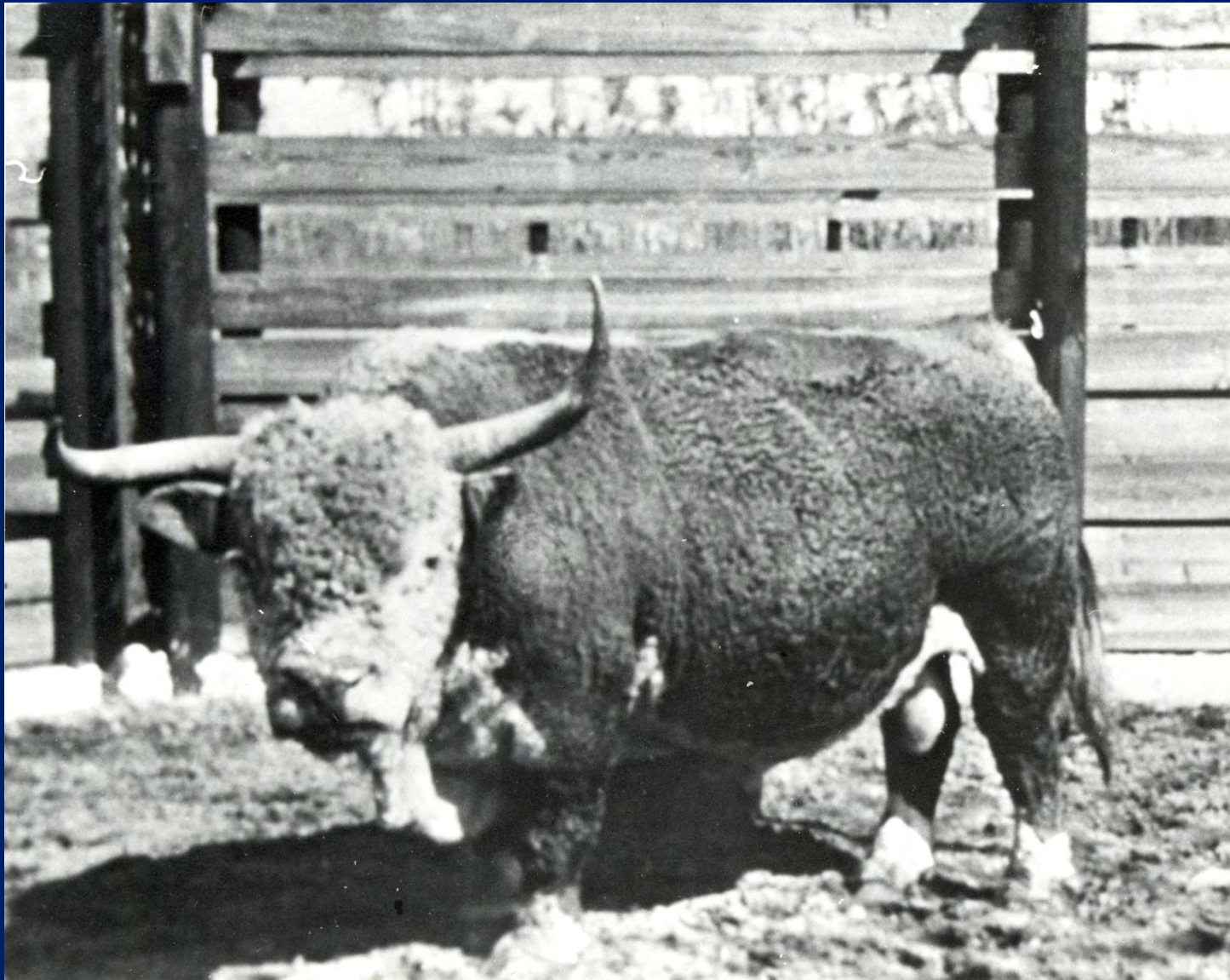
"No correlation has been found
between low setness and meat yielding
ability"

1959

1969

1979

Dwarfism



Quotes from the Florida Beef Shortcourse

In what year?

"Raw sugar may replace up to 50% of the corn "

1954

1968

1992

Quotes from the Florida Beef Shortcourse

In what year?

"The grassfed beef market is just beginning and will someday be common"

Doyle Conner

1956

1966

1976

Quotes from the Florida Beef Shortcourse

In what year?

"The industry is currently going through an upset stomach period which resulted from government interference"

Dr. Cunha

1960

1974

1999

Quotes from the Florida Beef Shortcourse

In what year?

"Cattlemen will be breeding for such things as tenderness and marbling one of these days"

Paul Goeser
Swift Packing Company

1957

1979

1991

Quotes from the Florida Beef Shortcourse

In what year?

"Its getting hard to get the land to go into the cattle business because of high real estate values."

1962

1979

2006

Land values

1950 \$57.61/acre

1959 \$223.90/acre

60 years of the Florida Beef Cattle Shortcourse

- Always been a good mix of industry and academic speakers
- Some of the biggest names in the field of research and extension have presented at the FL shortcourse
- Always a good mix of local (FL) and National with some International speakers represented

60 years of the Florida Beef Cattle Shortcourse

- Even the earliest shortcourses addressed the feeding and packing segments
- Always an eye on the end product=BEEF
- Florida was a leader in crossbreeding LONG before it was proven profitable or even considered acceptable!

60 years of the Florida Beef Cattle Shortcourse

- To my knowledge it is the longest running beef shortcourse in the US





Cal Burns- Animal ID



Prof Wakeman





60 years of Beef Cattle
Short Course History
Drs. Alvin Warnick &
Todd Thrift,
Department of Animal
Sciences, UF/IFAS,
Gainesville FL

Quotes from the Florida Beef Shortcourse

In what year?

"British breeds appear to differ little in their efficiency of beef production on range"

1950

1970

1990

Dr. Warwick

Topics from the Florida Beef Shortcourse

In what year was it first discussed?

"Micro computers and how cattlemen use them"

1968

1983

1992

Topics from the Florida Beef Shortcourse

In what year was it first discussed?

"was the first market outlook given"

Charles Bell USDA

1951

1960

1971

Topics from the Florida Beef Shortcourse

In what year was it first discussed?

"How to select a breeding bull which is unfitted."

Prof Wakeman

1950

1962

1982

Quotes from the Florida Beef Shortcourse

In what year?

"Meat tenderness is inherited and can be selected for"

1957

1969

2001

Topics from the Florida Beef Shortcourse

In what year was it first discussed?

"Injection site reactions"

Dr. Rae

1974

1984

1994

Topics from the Florida Beef Shortcourse

In what year was it first discussed?

"Embryo transplants in cattle"

1960

1974

1999

Topics from the Florida Beef Shortcourse

In what year was it first discussed?

"Proper administration of vaccines and dewormers"

1958

1968

1978

Topics from the Florida Beef Shortcourse

In what year was it first discussed?

"Implications of Florida water issues on future planning for forage and beef production"

1958

1968

1978

Topics from the Florida Beef Shortcourse

In what year was it first discussed?

"Round Bale Silage"

1969

1979

1989

Quotes from the Florida Beef Shortcourse

In what year?

"Brahman do better than Herefords @ low levels of nutrition...both do well when nutrition is adequate"

Dr. Hentges

1951

1961

1981

Topics from the Florida Beef Shortcourse

In what year was it first discussed?

"The "DUAL GRADING concept
introduced"

1953

1963

1973

YG and QG

Topics from the Florida Beef Shortcourse

In what year was it first discussed?

"Present Status of Futures Trading
with beef cattle"

1952

1966

1992

Topics from the Florida Beef Shortcourse

In what year was it first discussed?

"Comparisons of round bales with
other kinds of hay"

Dr. Hentges

1960

1975

1988

Quotes from the Florida Beef Shortcourse

In what year?

"a bull must be darker than a female
and not uniform in color to be highly
fertile"

Dr. Jan Bonsma

1955

1965

1985