



---

# Forage Management: Research and Extension Projects

*Beef Cattle Short Course 2013*

---

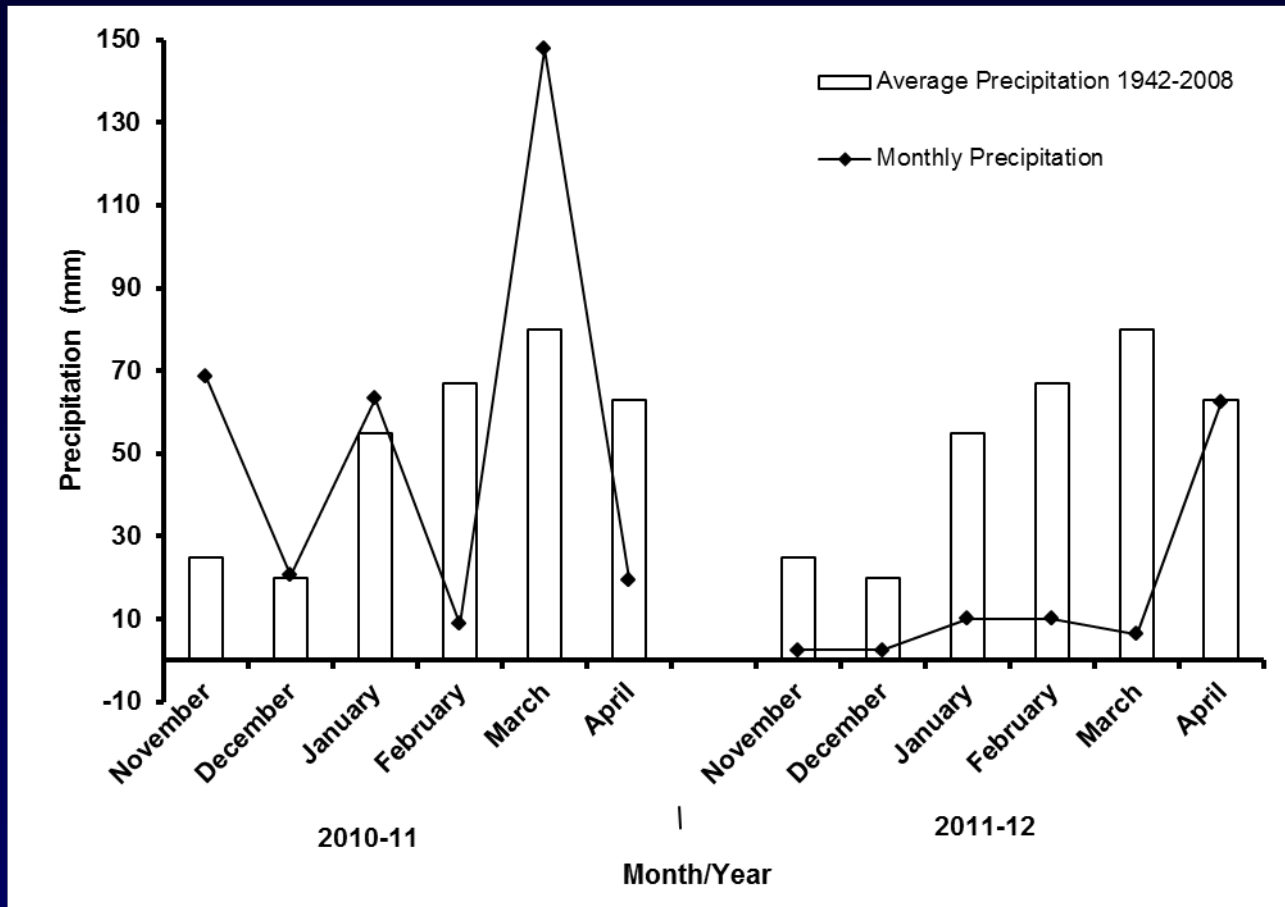
**Joe Vendramini**  
**Associate Professor**  
**UF/IFAS Range Cattle REC**

# Project 1 - Triticale

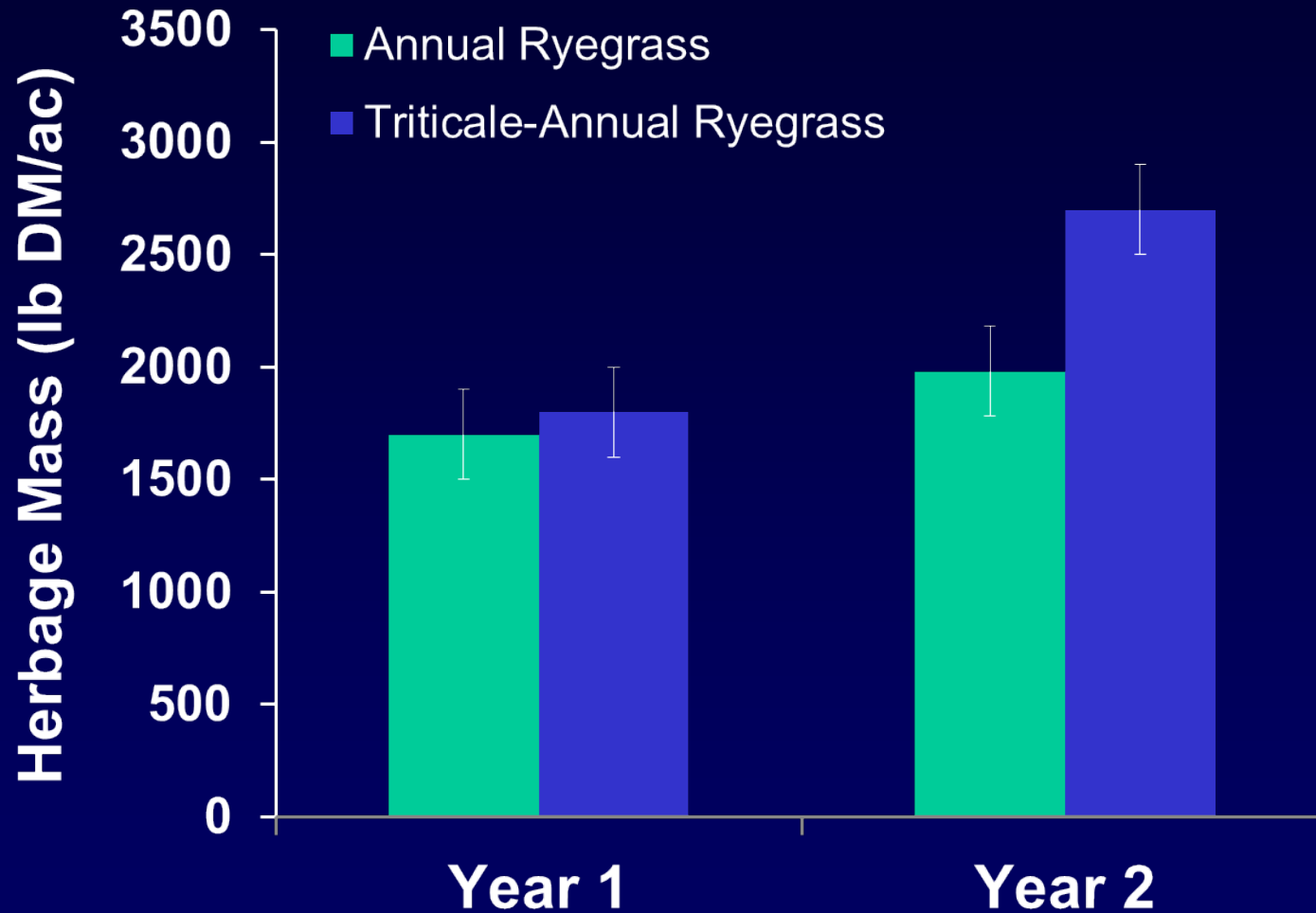
---

- ✓ Objective: Compare herbage production, nutritive value, and performance of early weaned calves grazing annual ryegrass or annual ryegrass-triticale mixtures in South Florida
- ✓ 'Jumbo' annual ryegrass and 'Jumbo' annual ryegrass- 'Trical 342' triticale pastures were seeded on November 15, 2010 and 2011,
- ✓ Seeding rates were 20 lb/ac for annual ryegrass with or without 100 lb/ac of triticale

# Project 1- Triticale

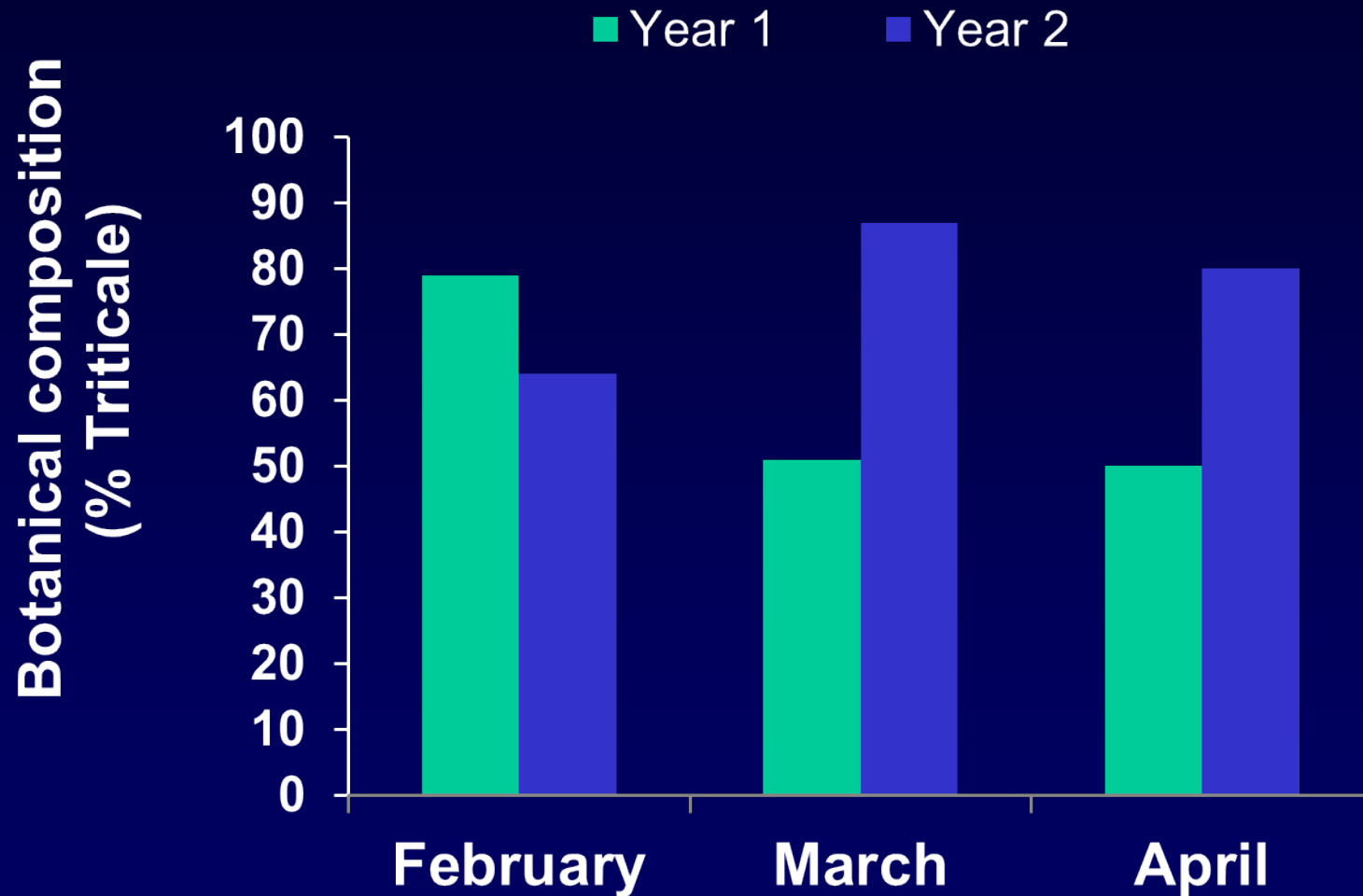


# Project 1 - Triticale



# Project 1 - Triticale

---



# Project 1 - Triticale

Tabela 1. Crude protein and in vitro digestible organic matter concentration in annual ryegrass or annual ryegrass – Triticale pastures

Response variable/ Year	Annual Ryegrass	Annual Ryegrass - Triticale
CP (%)	19.5a	15.0b
IVDOM (%)	80.0a	76.1b

<sup>1</sup> Means followed by different letters are different ( $P < 0.10$ )

# Project 1 - Triticale

---

Tabela 2. Average daily gain and gain per acre of early wenead calves grazing annual ryegrass or annual ryegrass – triticale pastures

Response variable	Annual Ryegrass	Annual Ryegrass - Triticale
ADG (lb/d)	1.9	1.7
Gain per acre (lb)	1,300	1,200

# Project 1 - Triticale

---

- ✓ Triticale was effective to increase HM on mixtures with annual ryegrass when rainfall was below average during the growing season
- ✓ Average daily gain was similar between treatments



# Project 2 - Jiggs

---

- ✓ Objective: Evaluate the effects of stocking rates in Jiggs forage production, nutritive value, persistence, and animal performance
- ✓ Jiggs pastures grazed at 3 (Low), 8 (Medium), or 13 (High) calves (350 lb)/ac
- ✓ Calves were supplemented at 1% BW (14% CP and 78 % TDN)

# Project 2 - Jiggs

Tabela 3. Effects of stocking rate on Jiggs herbage mass, nutritive value, and ground cover.

	Stocking Rate		
	Low	Medium	High
Herbage Mass (lb/ac)	4.3a	3.6b	2.6c
CP (%)	16	16	16
IVDOM (%)	50	50	50
Jiggs cover (%)	95a	78b	39c

# Project 2 - Jiggs

---



# Project 2 - Jiggs



# Project 2 - Jiggs

Tabela 3. Effects of stocking rate on animal performance of calves grazing Jiggs pastures

	Stocking Rate		
	Low	Medium	High
ADG (lb/d)	1.5a	0.9b	0.7c
Gain per acre (lb)	775a	1,000b	1,190c

# Project 2 - Jiggs

---

- ✓ Jiggs is a suitable bermudagrass to be grazed in South Florida, however, pastures should not be overstocked
- ✓ Jiggs stubble height should be maintained at approximately 8 inches

# Forage Extension Laboratory

---

- ✓ Approximately 400 samples/year
- ✓ Reports CP and TDN
- ✓ The actual price is \$ 5 but the price will be increased to \$ 7 by July 1 2013.
- ✓ Submission forms can be found at: <http://rcrec-ona.ifas.ufl.edu/agronomy/forage-extension-laboratory.shtml> or contact your County Extension Office

# Forage Extension Laboratory

---

Forage Species	CP	TDN
<b>Bahiagrass</b>	7.7 ± 3.0	51 ± 5
<b>Bermudagrass</b>	9.5 ± 3.6	53 ± 6
<b>Stargrass</b>	9.4 ± 3.0	52 ± 6
<b>Limpograss</b>	4.8 ± 2.2	54 ± 6
<b>Corn Silage</b>	8.7 ± 2.2	73 ± 5





Thank you

Joao Vendramini

UF/IFAS Range Cattle REC, Ona FL

[jv@ufl.edu](mailto:jv@ufl.edu)