



2018 Corn Silage and Forage Field Day

FORAGE BREEDING AND GENOMICS LAB

Principal Investigator: Dr. Esteban Rios,

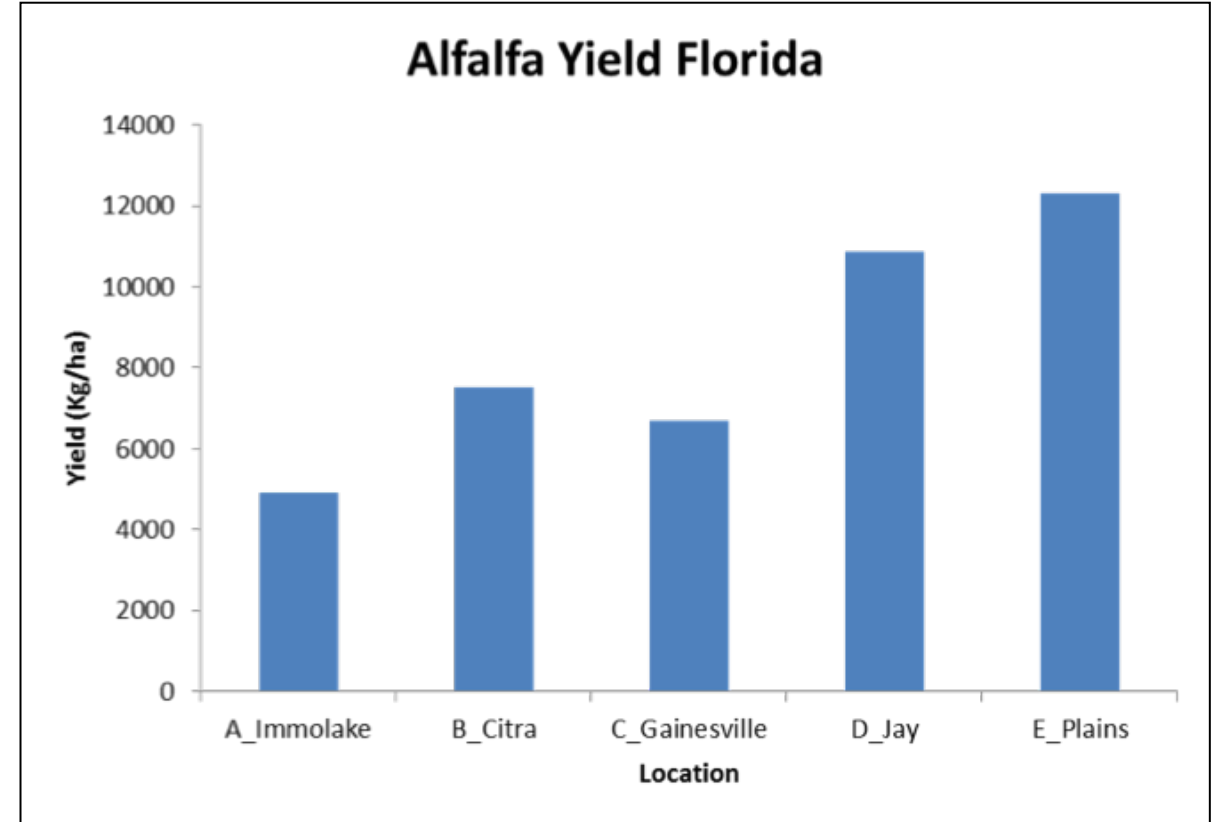
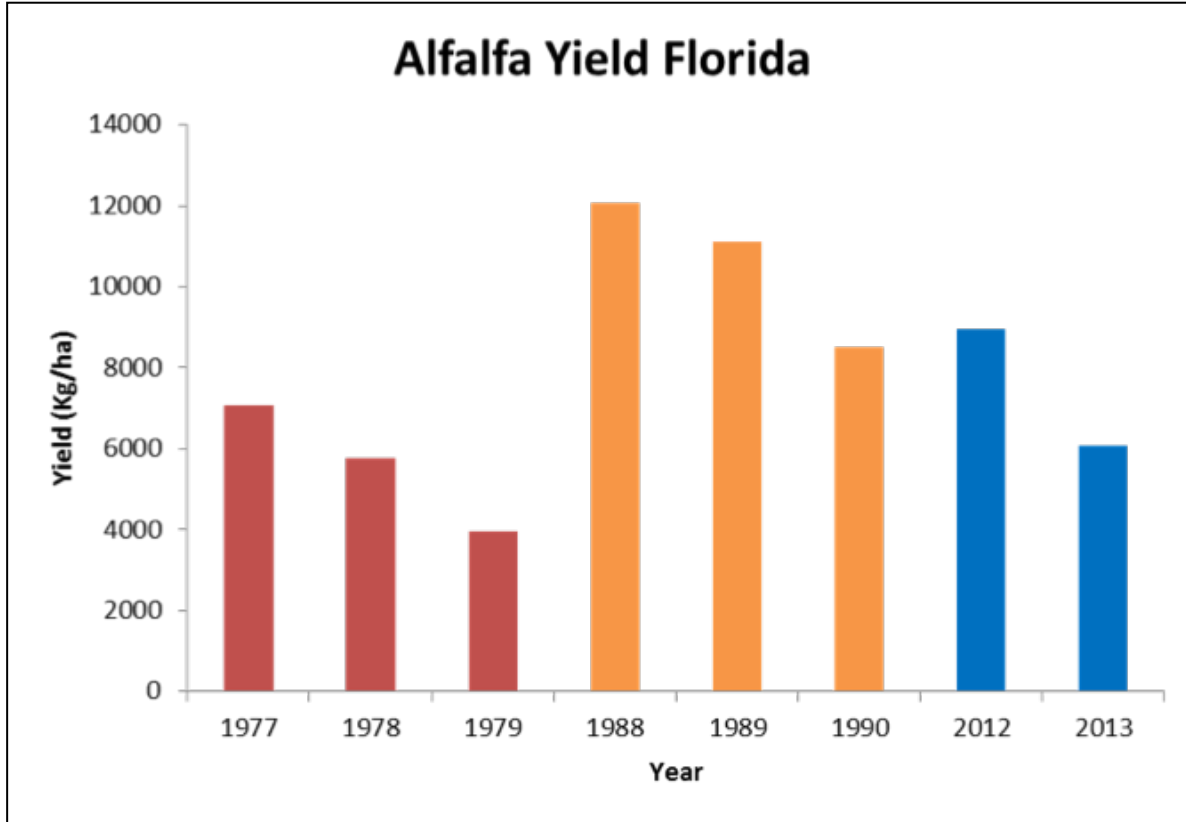
Assistant Professor, Forage Breeding and Genetics

Department of Agronomy, University of Florida

Biological Scientist: Dr. Yolanda Lopez

Masters student: Janam Prabhat Acharya, Augusto Mendoza

History of Alfalfa in Florida



- Queen of Forages
- UF has released two varieties namely: **FL 77** and **FL 99**
 - FL 77: Alfalfa aphid and Yield
 - FL 99: Phytophthora, Anthracnose and Alfalfa aphid
- North-Central Florida → Potential for Alfalfa production

NIFA Variety Trial

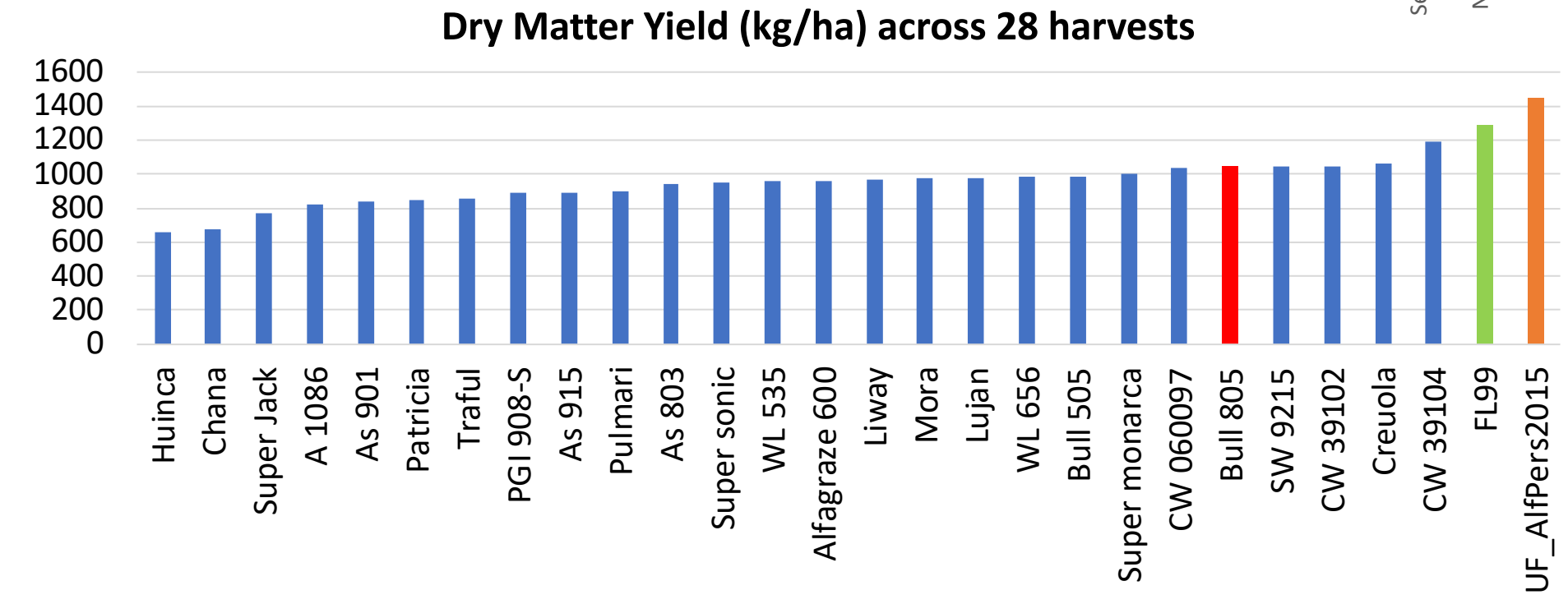
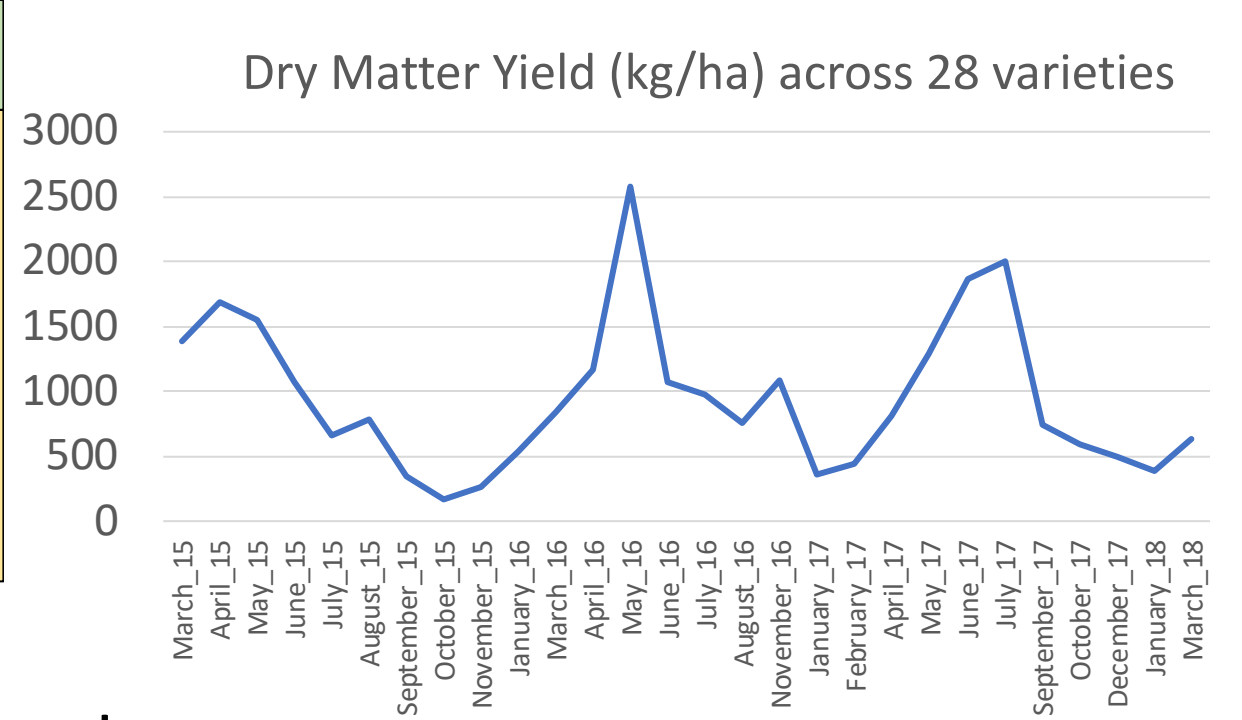
DATE OF PLANTING: 27th OCTOBER 2014

EXPERIMENTAL DESIGN: RANDOMIZED COMPLETE BLOCK DESIGN

28 VARIETIES FROM DIFFERENT COUNTRIES

UF_AlfPers2015: PERSISTANT ALFALFA BREEDING LINE WAS OBTAINED FROM FLORIDA99

UF_AlfPers2015 HAS POTENTIAL FOR CULTIVAR RELEASE

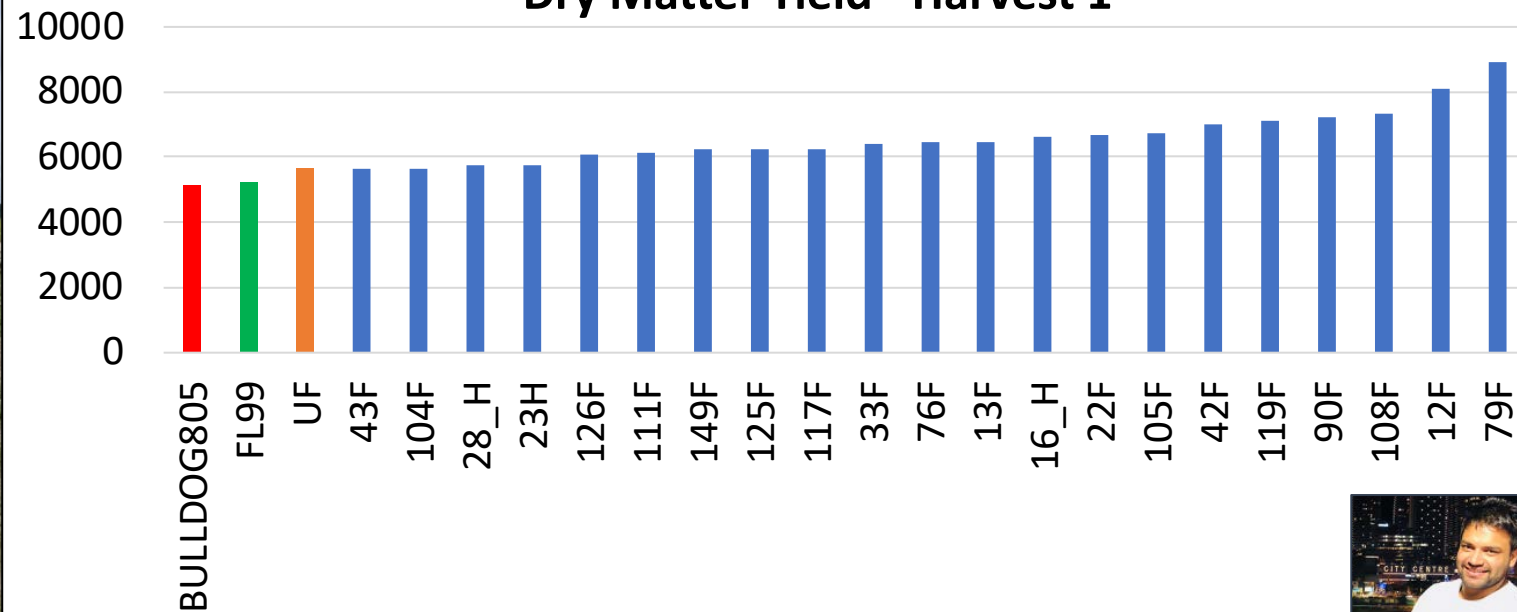


ALFALFA GENOMIC PREDICTION

- DATE OF PLANTING: 20TH NOVEMBER 2017
- EXPERIMENTAL DESIGN: ROW-COLUMN
- 145 FULL-SIB AND 36 HALF-SIB FAMILIES CREATED BY CROSSING SELECTED PARENTS FROM PREVIOUS EXPERIMENTS
- 3 CONTROLS WERE USED FL99, BULLDOG 805 AND AlfPers2015
- DATA: BIOMASS, HEIGHT, FLOWERING, NUTRITIVE VALUE
- GENOMIC DATA: SEQUENCE CAPTURE WITH 10,000 PROBES



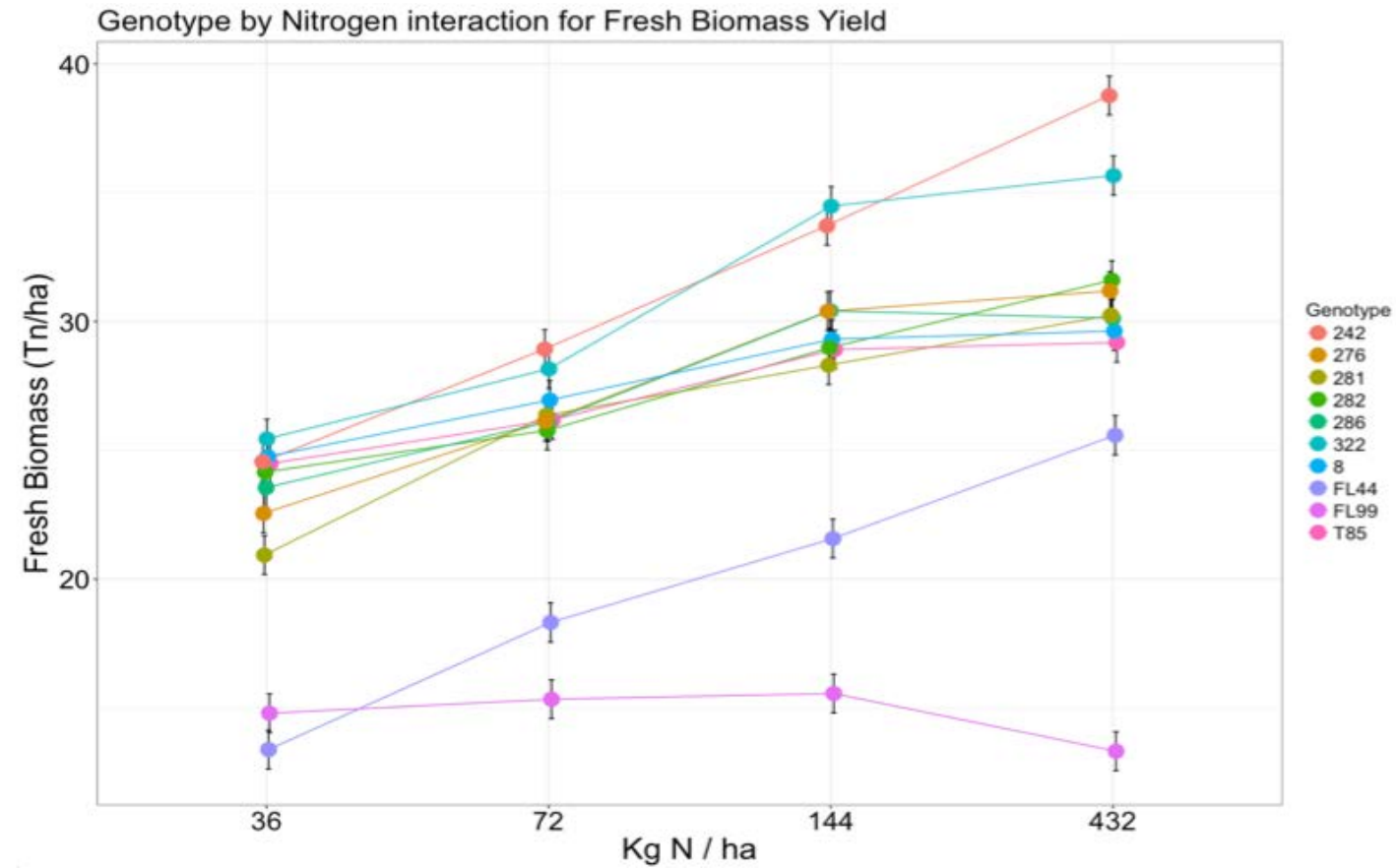
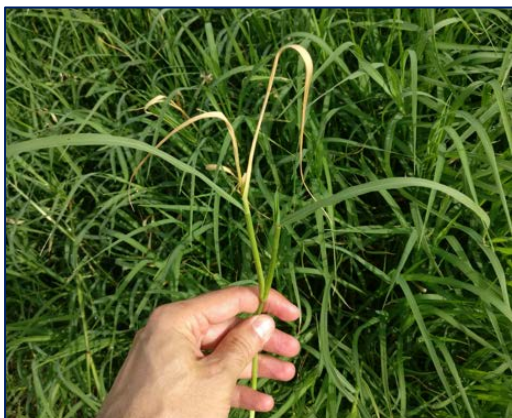
Dry Matter Yield - Harvest 1





Bermudagrass Fertility Study

- DATE OF PLANTING: JULY 2015
- EXPERIMENTAL DESIGN: RCBD
- GENOTYPES: 9 BERMUDAGRASS (T85, FL44) AND 1 FL99 ALFALFA
- N RATES: 36, 72, 144 AND 432 KG N / HA
- DATA: BIOMASS, NUTRITIVE VALUE, N UPTAKE, BSM



Bermudagrass Fertility Study

