

Meat ID

2003

Larry Eubanks

Beef Chuck 7-Bone Steak



Pork Loin Back Ribs



Beef Chuck Arm Steak



Beef Chuck Blade Roast



Beef Round Bottom Round Roast



Beef Brisket Flat Half



Pork Loin Butterfly Chop Boneless



Beef Chuck 7-Bone Roast



Beef Chuck Arm Pot Roast



Beef Round Bottom Round Steak



Beef Chuck Eye Roast



Beef Shank Cross-Cut Boneless



Pork Loin Smoked Rib Chops



Beef Chuck Blade Steak



Pork Loin Rib Chop



Pork Shoulder Arm Picnic



Pork Loin Sirloin Chop



Pork Loin Tender Loin



Beef Shank Cross-Cut



Pork Side Sliced Bacon



Beef Round Eye Round Roast



Beef Flank Steak



Beef Variety Heart



Beef Chuck Mock Tender Steaks



Pork Side Spareribs



Beef Oxtails



Beef Loin Porterhouse Steak



Pork Shoulder Blade Steak



Beef Rib Roast Large End



Beef Loin Tenderloin Roast



Beef Round Top Round Steak



Beef Rib Steak Small End



Lamb Leg Sirloin Half



Beef Rib Eye Roast



Lamb Variety Heart



Beef Rib Eye Steak



Beef Loin Round Bone Sirloin Steak



Lamb Shoulder Blade Chop



Beef Rib Roast Small End



Beef Plate Skirt Steak



Beef Various Stew Meat



Beef Variety Sweetbreads



Lamb Loin Roast



Beef Loin T-Bone Steak



Beef Loin Tenderloin Steaks



Lamb Variety Liver



Beef Round Tip Roast Cap Off



Beef Round Tip Roast



Lamb Variety Kidneys



Lamb Leg Shank Half



Lamb Leg American Style



Lamb Leg Center Slice



Lamb Leg French Style



Lamb Leg Sirloin Chop



Lamb Loin Double Chop



Pork Loin Center Loin Roast



Lamb Loin Chop



Lamb Neck Slices



Lamb Rib Roast



Beef Round Tip Steak Cap Off



Beef Loin Top Loin Steak



Beef Round Top Round Roast



Beef Loin Top Sirloin Steak



Lamb Shoulder Arm Chop



Lamb Breast Riblets



Lamb Shoulder Boneless



Pork Various Link Sausage



Lamb Shoulder Roast



Pork Shoulder Arm Steak



Pork Loin Blade Chop



Pork Loin Blade Roast



Pork Loin Canadian Style Bacon



Pork Loin Country Style Ribs



Pork Various Cube Steak



Pork Side Fresh Side



Pork Hock Fresh



Beef Various Cube Steak



Beef Round Eye Round Steak



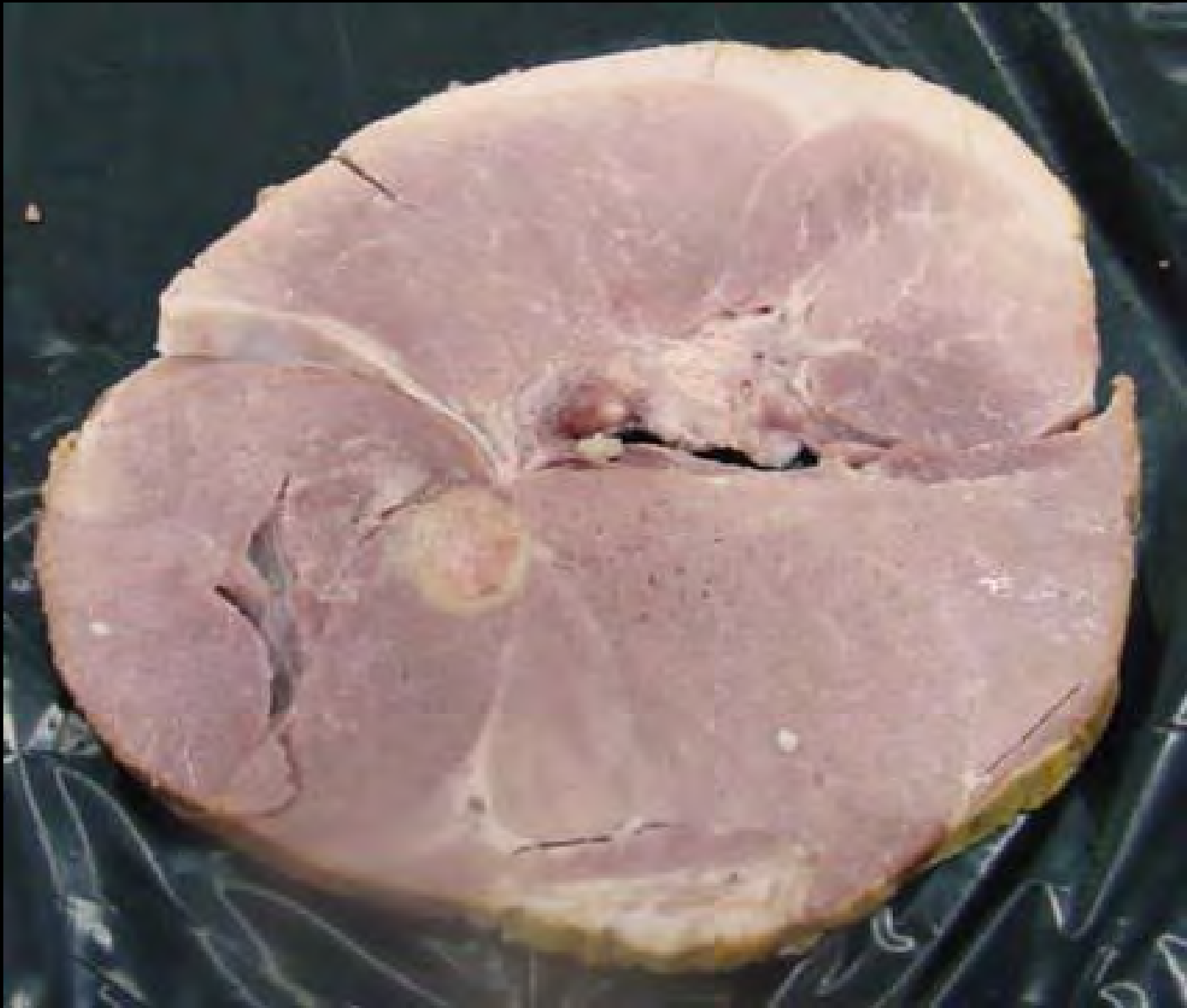
Pork Loin Chop



Beef Loin Sirloin Flat Bone Steak



Pork Ham Center Slice



Pork Variety Heart



Pork Variety Kidney



Pork Loin Double Roast Boneless



Pork Loin Rib Roast



Pork Loin Sirloin Roast



Pork Loin Top Loin Chop Boneless

