

# Meat ID

2007

Larry Eubanks

# Beef Round Bottom Round Steak



4H : B K 9 St M  
FFA: B 11 49

# Beef Loin Porterhouse Steak



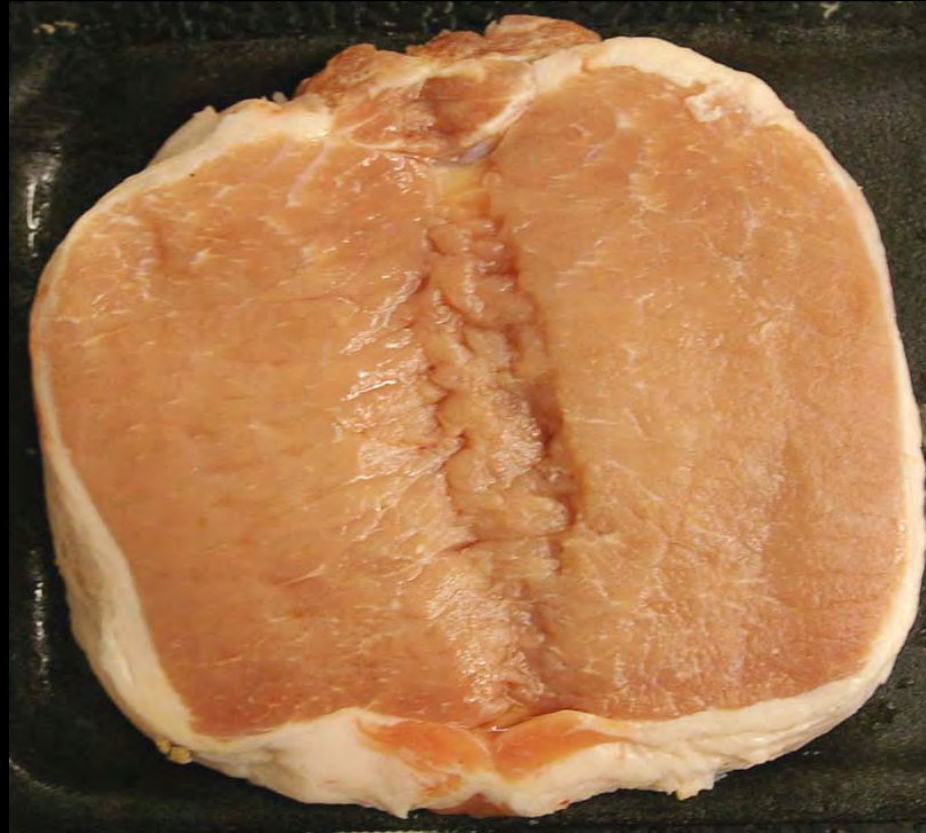
4H: B H 49 St D  
FFA: B 8 66

# Beef Loin Top Loin Steak



4H:B H 54 St D  
FFA: B 8 71

# Pork Loin Butterfly Chop



4H: P H 11 CH D  
FFA: P 8 78

# Pork Loin Chop



4H: P H 24 CH D  
FFA: P 8 80

# Pork Loin Tenderloin



4H: P H 50 RO D  
FFA: P 8 40

# Pork Various Smoked Hocks



4H: P M 87 \_\_ M

FFA: P 17 107



# Pork Loin Blade Chop



4H: P H 6 CH D/M

FFA: P 8 76

# Lamb Leg Center Slice



4H: L G 12 SL D

FFA: L 7 50

# Beef Chuck Arm Pot Roast



4H: B C 2 RO M  
FFA: B 3 3

# Beef Rib Eye Steak



4H: B J 29 ST D  
FFA: B 10 18

# Beef Variety Oxtail



4H: B P 62 M  
FFA: B 16 90

# Beef Chuck Seven Bone Steak



4H: B C 35 ST D/M  
FFA: B 3 59

# Beef Round Eye Round Steak



4H: B K 16 ST D/M  
FFA: B 11 52

# Beef Plate Skirt Steak



4H: B I 40 ST D/M

FFA: B 9 63



# Pork Loin Rib Chop



4H; P H 28 CH D  
FFA: P 8 81

# Pork Loin Back Ribs



4H: P H 66 \_\_ D/M  
FFA: P 8 5

# Lamb Shoulder Arm Chop



4H: L M 2 CH D/M  
FFA: L 13 75

# Pork Side Sliced Bacon



4H: P N 5 SL D  
FFA: P 14 115

# Pork Loin Sirloin Roast



4H: P H 37 RO D  
FFA: P 8 35

# Beef Round Bottom Round Roast



4H: B K 9 RO D/M  
FFA: B 11 8

# Beef Flank Steak



4H: B D 17 ST D/M  
FFA: B 4 53

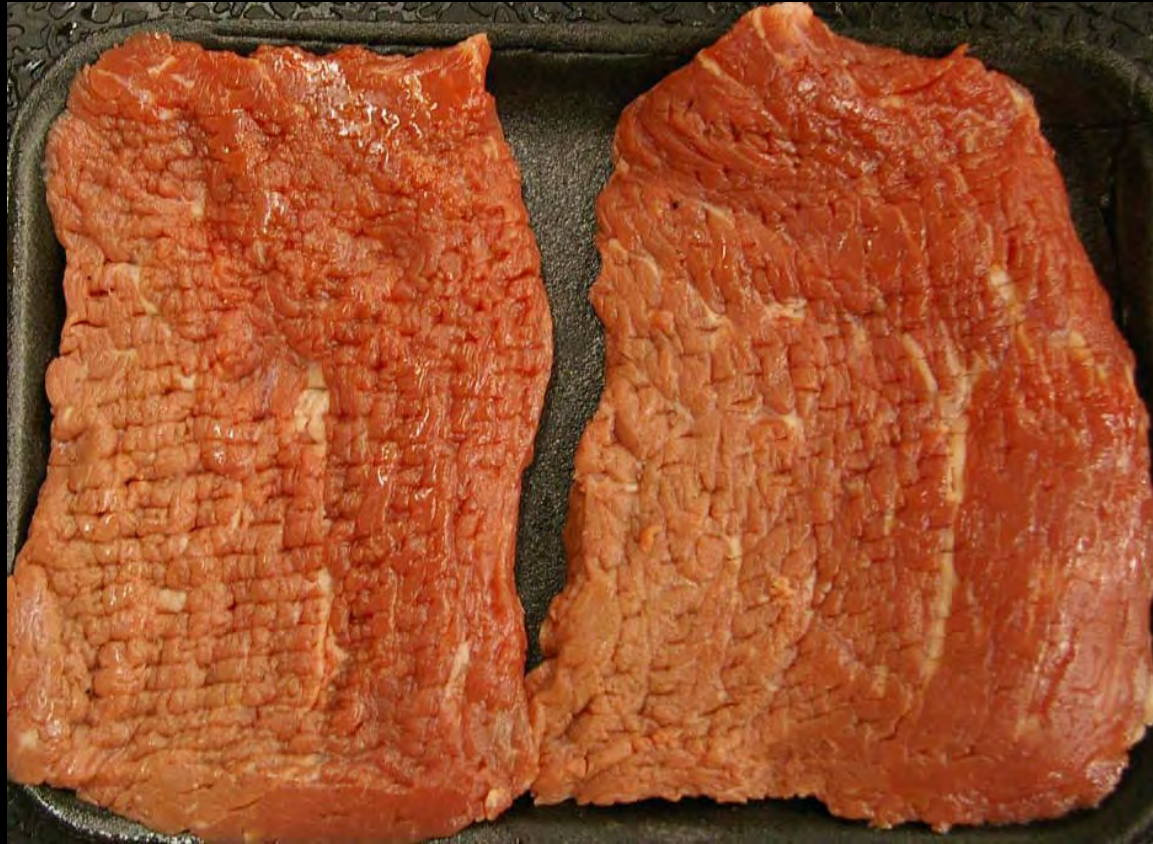
# Beef Chuck Blade Steak



4H: B C 6 ST D/M  
FFA: B 3 48

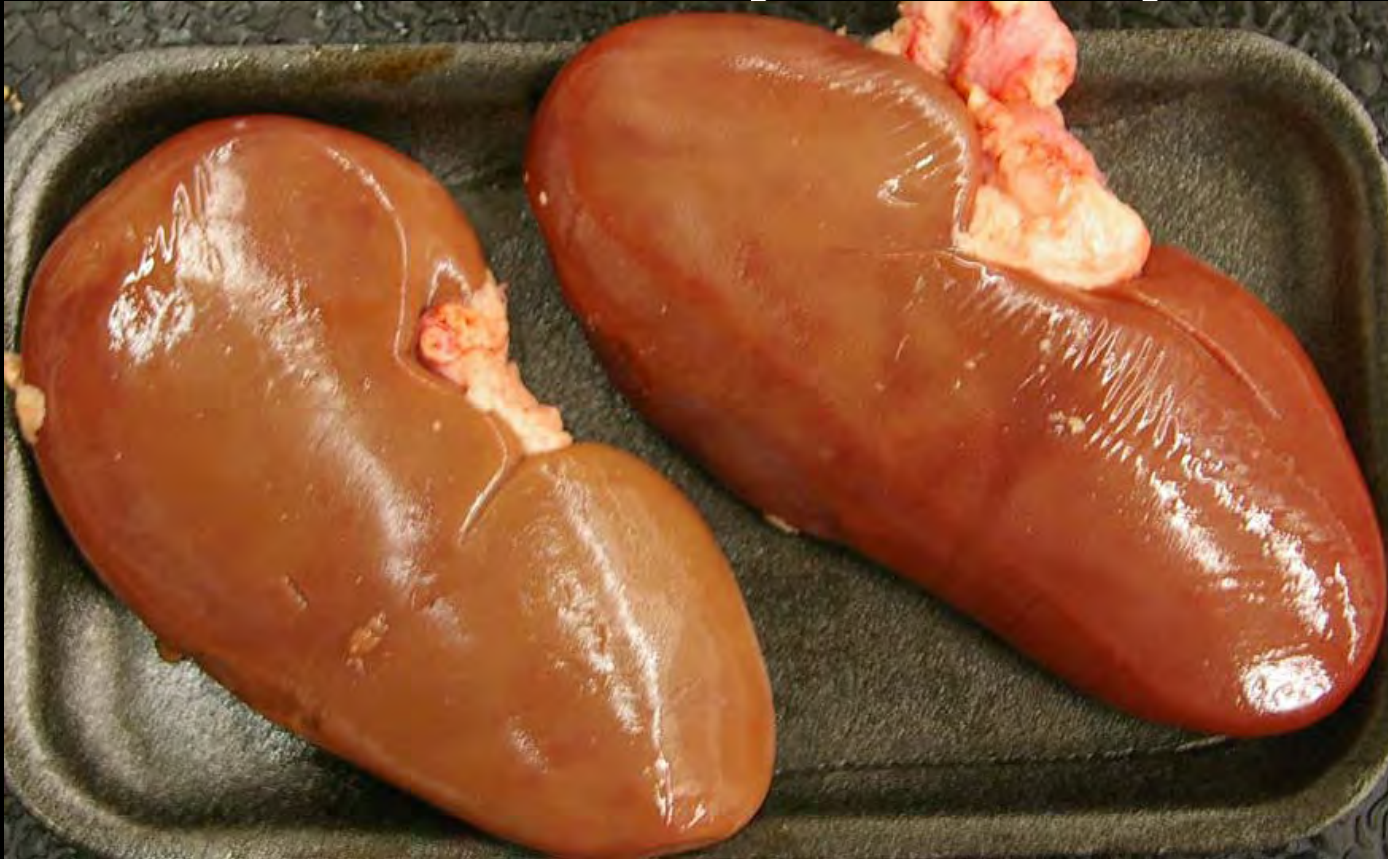


# Beef Various Cube Steak



4H: D Q 14 ST D/M  
FFA: B 17 95

# Pork Variety Kidneys



4H: B P 60 \_\_ D/M

FFA: B 16 88

# Lamb Rib Roast



4H: L J 28 RO D  
FFA: L 10 28

# Lamb Rib Chop



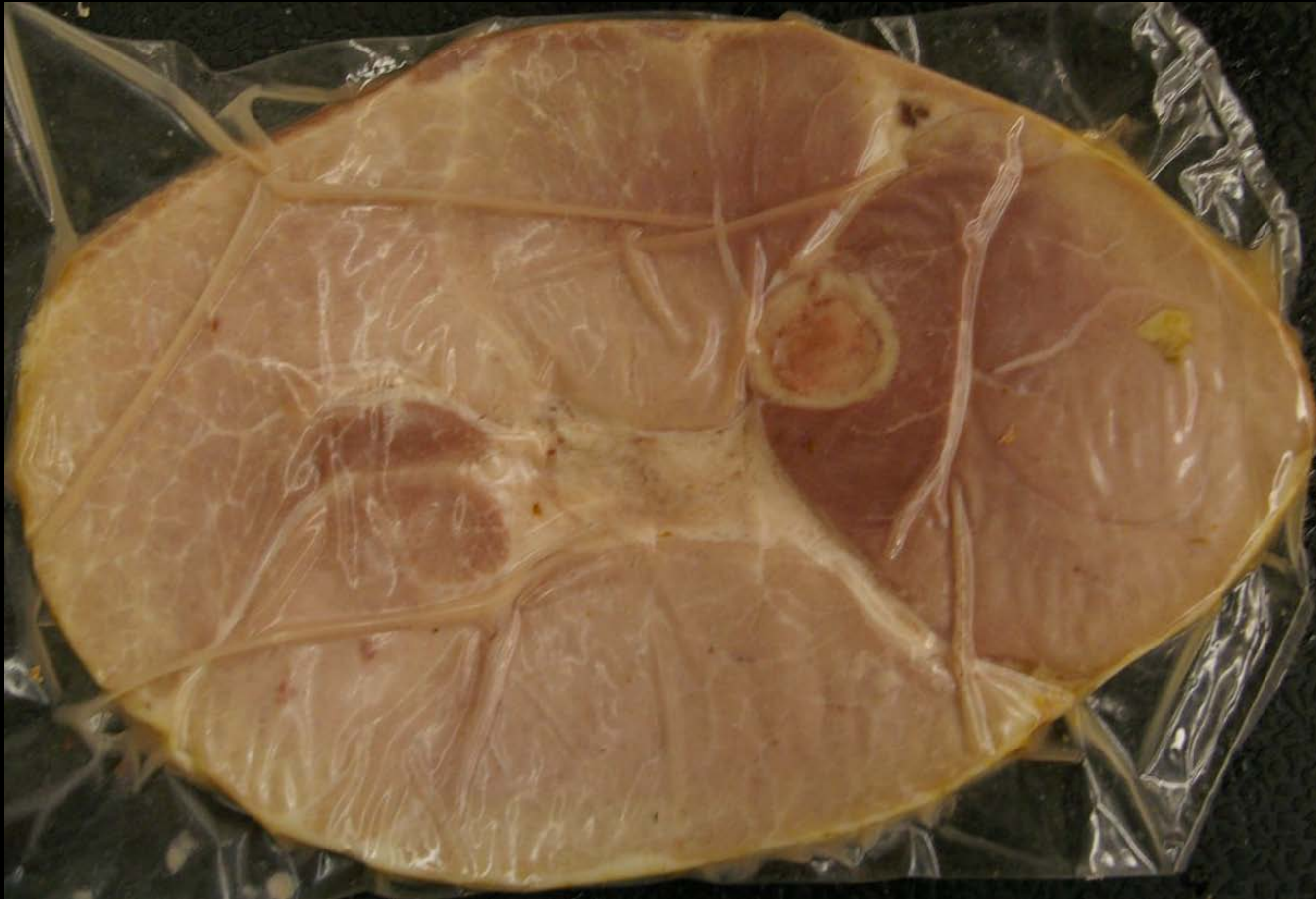
4H: L J 28 CH D  
FFA: L 10 81

# Pork Shoulder Arm Picnic



4H: P M 4 RO D/M  
FFA: P 13 2

# Pork Ham Center Slice



4H: P E 41 S L D  
FFA: P 5 104

# Beef Round Tip Steak, Cap Off



4H: B K 52 ST D  
FFA: B 11 69

# Pork Loin Blade Roast



4H: P H 6 RO D/M  
FFA: P 8 6



# Beef Loin Tenderloin Steaks



4H: B H 50 ST D  
FFA: B 8 67

# Beef Round Eye Round Roast



4H: B K 16 RO D/M  
FFA: B 10 18

# Beef Shanks Cross Cuts



4H B L 74 M  
FFA B 12 16

# Beef Various Beef For Stew



4H B Q 68 \_\_ M  
FFA B 17 94

# Beef Variety Sweetbreads



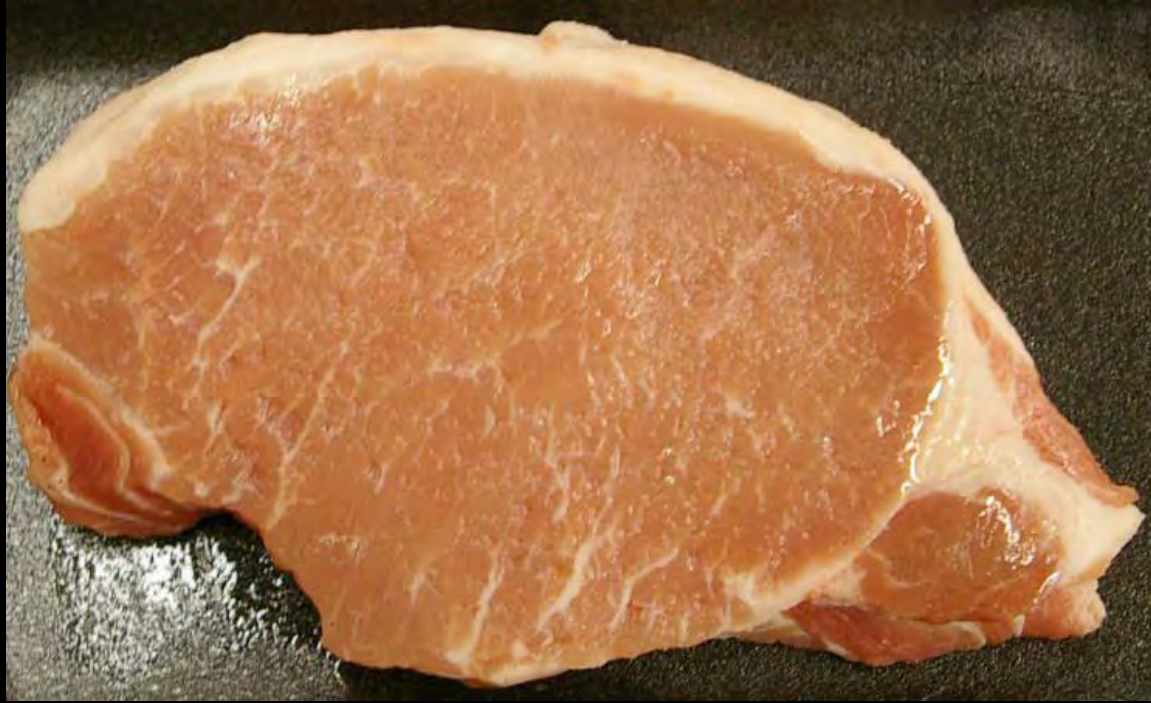
4H B P 63 \_\_ D/M  
FFA B 16 91

# Beef Rib Steak Small End



4H B J 31 S T D  
FFA B 10 64

# Pork Loin Top Loin Chop Boneless



4H P H 55 CH D  
FA P 8 85

# Pork Side Slab Bacon



4H P N 67 \_ D  
FFA P 14 114



# Lamb Shoulder Neck Slice



4H L M 26 SL M  
FFA L 13 55

# Loin Steak Boneless Beef Loin Top



4H B H 57 ST D  
FFA B 8 74

# Beef Variety Kidneys



4H B P 60 \_\_ D/M  
FFA B 16 88

# Beef Rib Eye Steak



4H B J 29 ST D  
FFA B 10 51

# Beef Brisket Whole



4H B B 70 \_\_ M  
FFA B 2 11

# Beef Round Top Round Steak



4H B K 56 ST D  
FFA B 11 73

# Beef Rib Eye Roast



4H B J 29 RO D  
FFA 8 10 18

# Lamb Loin Chop



4H L H 24 CH D  
FFA L 8 80



# Pork Loin Top Loin Chop



4H P H 54 CH D  
FFA P 8 84

# Pork Loin Sirloin Chop



4H PH 37 CH D  
FFA P 8 83

# Beef Round Tip Roast Cap Off



4H B K 52 ST D  
FFA B 11 69

# Beef Round Tip Steak Cap on



4H B K 51 ST D  
FFA B 11 68

# Beef Round Bottom Round Rump Roast



4H B K 10 RO D/M  
FFA B 11 8

# Beef Chuck Seven Bone Roast



4H B C 35 RO M  
FFA B 3 31

# Pork Side Fresh Side



4H NOT APPLICABLE  
FFA P 14 22

# Beef Plate Short Ribs



4H B I 86 \_\_ M  
FFA B 9 33



# Beef Loin Top Loin Steak



4H B H 54 ST D  
FFA B 8 71

# Beef Chuck Blade Steak



4H B C 6 ST D/M  
FFA B 3 48

# Beef Chuck Mock Tender



4H B C 25 RO M  
FFA B 3 26

# Lamb Shank



4H L L 84 \_\_ M  
FFA NOT APPLICABLE

# Beef Shank Cross Cuts Boneless



4H B L 75 \_\_ M  
FFA B 12 17

# Beef Loin Tenderloin Roast



4H B H 50 RO D  
FFA B8 40

# Beef Rib Small End Roast



4H B J 31 RO D  
FFA B 10 37

# Beef Chuck Mock Tender Steak



4H B C 25 ST M  
FFA B 3 54



# Pork Various Fresh Hock



4H P M 77 \_\_ M  
FFA P 17 98

# Pork Loin Blade Chop



4H P H 6 CH D/M  
FFA P 8 76

# Lamb Shoulder Square Cut Whole



4H L M 48 RO D/M  
FFA L 13 39

# Lamb Leg Sirloin Half



4H L G 39 RO D  
FFA L 7 36

# Pork Various Cube Steak



4H B Q 14 ST D/M  
FFA B 17 95

# Pork Side Spare Ribs



4H P Q 89 \_\_ D/M  
FFA P 15 38

# Pork Shoulder Boston Butt



4H P M 8 RO D/M  
FFA P 13 7

# Pork Loin Roast



4H P H 24 RO D  
FFA P 8 12



# Pork Shoulder Arm Steak



4H P M 2 ST D/M  
FFA P 13 46

# Pork Loin Sirloin Cutlets



4H P H 86 \_\_ D  
FFA P 8 62

# Pork Shoulder Blade Steak



4H P M 6 ST D/M  
FFA P 13 48

# Pork Loin Center Rib Roast



4H P H 28 RO D  
FFA P 8 13